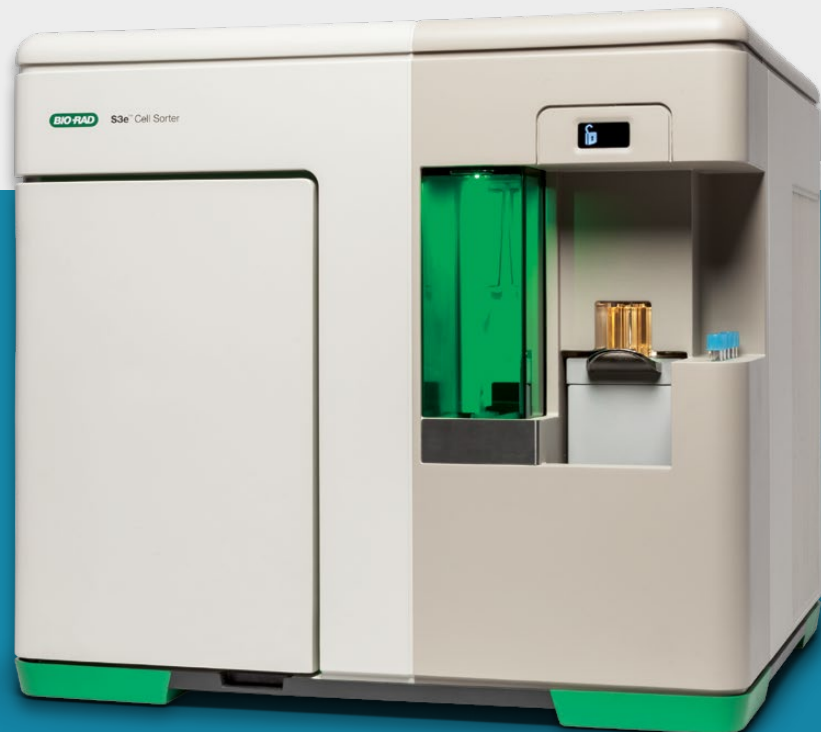


# Bring Cell Sorting to Your Lab



## Benefits

- Unparalleled ease of use
- Sorts rare cells
- Walk-away automation
- Trusted customer care

## Experience the benefits of cell sorting in your lab with the S3e™ Cell Sorter

On the path to your breakthroughs, there is little room for core facility wait times, low quality samples, sample degradation during transport, or results you just aren't confident in. The S3e Cell Sorter grants you powerful access to new research areas and rarer cell types without sacrificing efficiency or losing confidence.

But bringing fluorescence-based sorting to your benchtop should still address all of your needs. You need to consider who can use it, how adaptable it is, and whether it is capable of producing great data. What will an S3e Cell Sorter in your lab give you?

## Unmatched Ease of Use

The S3e Cell Sorter is the most approachable system available today. New users can be up and running in less than half a day, regardless of skill level.

## Walk-Away Automation

Active sort monitoring and sample loss prevention features let you walk away from your sort, mid-run. You can even get text and email sort status notifications, so your only worry will be how to analyze all your great data.

## Peace of Mind

You deserve a trusted partner that wants to see you succeed. Make the move to establish a cell sorting system in your lab and the support you need will be just a button push away. Bio-Rad's experienced service engineers can provide either on-call or on-site support for instruments under warranty or service contract.

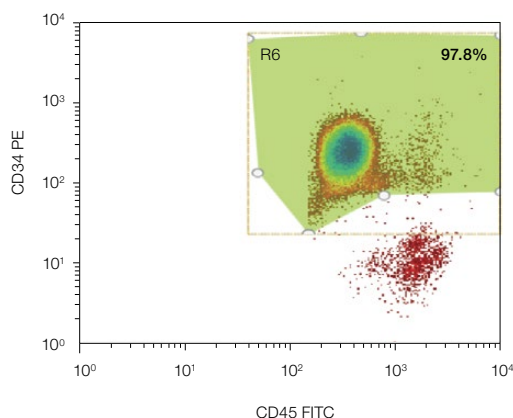
## Rare Cell Sorting

The S3e Cell Sorter is fast enough for rare cell sorting (isolate 10,000 cells with a 0.1% frequency in under 20 minutes) but gentle enough to sort delicate cell types. You'll get better results and feel more confident about your data using pure and healthy samples.

## Specifications

Droplet frequency	37–43 kHz
Sorting type	True jet-in-air for high-performance sorting
Sorting rate	No hardware limitations for sort rate; limited only by droplet frequency and application
Sorting purity	>99% pure
Nozzle size	100 µm
Sorting direction	2-way sorting
Sorting collection	Up to 5 x 5 ml sample tubes each direction Up to 5 x 1.5 ml tubes each direction Microscope slides 8-well flat bottom strip each direction 8-well low-profile PCR strip each direction
Lasers	Single laser: 488 nm 100 mW Dual laser: 488 and 561 nm 100 mW; 488 and 640 nm 100 mW Tri laser: 488, 561, and 640 nm 100 mW; 405, 488, and 561 nm 100 mW; 405, 488, and 640 nm 100 mW
Detection	Forward scatter (FSC) with PMT Side scatter (SSC) with PMT Up to four fluorescence detectors with PMT Minimum resolution: 0.5 µm
Sensitivity	<125 MESF for FITC and PE
Temperature range	Sample and collection temperature control system: 4–37°C Peltier solid-state system
Fluidics	Onboard fluidics and dilution of ProFlow™ Sort Grade 8x Sheath Fluid with deionized water
Data format	FCS 3.1
Dimensions (W x D x H)	70 x 65 x 65 cm (2.3 x 2.1 x 2.1 ft)

## CD34+ and CD45+ Post-Sort Purity Analysis



**Putting our claims to the test.** Peripheral blood mononuclear cells (PBMCs) were stained with 7-AAD, CD34 PE, and CD45 FITC. CD34+ and CD45+ cells were identified and sorted at 10,000 events/sec. Post-sort purity was an exceptional 97.83%.

## Ordering Information

Catalog #	Description
<b>Instrumentation</b>	
1451005	<b>S3e Cell Sorter (488 nm)</b> , with two fluorescence detectors and ProSort™ Software
1451006	<b>S3e Cell Sorter (488/561 nm)</b> , with four fluorescence detectors and ProSort Software
1451008	<b>S3e Cell Sorter (488/640 nm)</b> , with four fluorescence detectors and ProSort Software
12007052	<b>S3e Cell Sorter (488/561/640 nm)</b> , with four fluorescence detectors and ProSort Software
12007058	<b>S3e Cell Sorter (405/488/561 nm)</b> , with four fluorescence detectors and ProSort Software
12007059	<b>S3e Cell Sorter (405/488/640 nm)</b> , with four fluorescence detectors and ProSort Software
1451078	<b>S3e Biosafety System Class I</b>
<b>Consumables</b>	
1451086	<b>ProLine™ Universal Calibration Beads</b> , 3 x 5 ml bottles
1451082	<b>ProFlow Sort Grade 8x Sheath Fluid</b> , 5 x 4 L containers, preservative free
1451083	<b>ProFlow Sort Grade Water</b> , 5 x 4 L containers, sterile-filtered, endotoxin-tested water
1451085	<b>ProLine Rainbow Beads</b> , 1 x 5 ml bottle, mixture of 3.0–3.4 µm beads dyed with 8 different fluorescence intensities
<b>Accessories</b>	
1451065	<b>S3e Accessory Kit</b> , includes 100 µm nozzle tip, 2 nozzle O-rings, 2 nozzle alignment disks, 1 ml syringe, 2 neutral density filters (1.0), 2 mm hex driver, spanner wrench
1451084	<b>S3e Fluidic Container</b> , 3 x 4 L containers, gamma-irradiated, sterile

**BIO-RAD**

**Bio-Rad  
Laboratories, Inc.**

Life Science  
Group

Web site [bio-rad.com](http://bio-rad.com) USA 1 800 424 6723 Australia 61 2 9914 2800 Austria 43 01 877 89019 Belgium 32 03 710 53 00 Brazil 55 11 3065 7550  
Canada 1 905 364 3435 China 86 21 6169 8500 Czech Republic 36 01 459 6192 Denmark 45 04 452 10 00 Finland 35 08 980 422 00 France 33 01 479 593 00  
Germany 49 089 3188 4393 Hong Kong 852 2789 3300 Hungary 36 01 459 6190 India 91 124 4029300 Israel 972 03 963 6050 Italy 39 02 49486600  
Japan 81 3 6361 7000 Korea 82 2 3473 4460 Mexico 52 555 488 7670 The Netherlands 31 0 318 540 666 New Zealand 64 9 415 2280 Norway 47 0 233 841 30  
Poland 36 01 459 6191 Portugal 351 21 4727717 Russia 7 495 721 14 04 Singapore 65 6415 3188 South Africa 36 01 459 6193 Spain 34 091 49 06 580  
Sweden 46 08 555 127 00 Switzerland 41 0617 17 9555 Taiwan 886 2 2578 7189 Thailand 66 2 651 8311 United Arab Emirates 971 4 8187300  
United Kingdom 44 01923 47 1301

