

# NGC Chromatography Systems

## Module Selection Guide



# DESIGNED BY YOU. BUILT BY BIO-RAD.

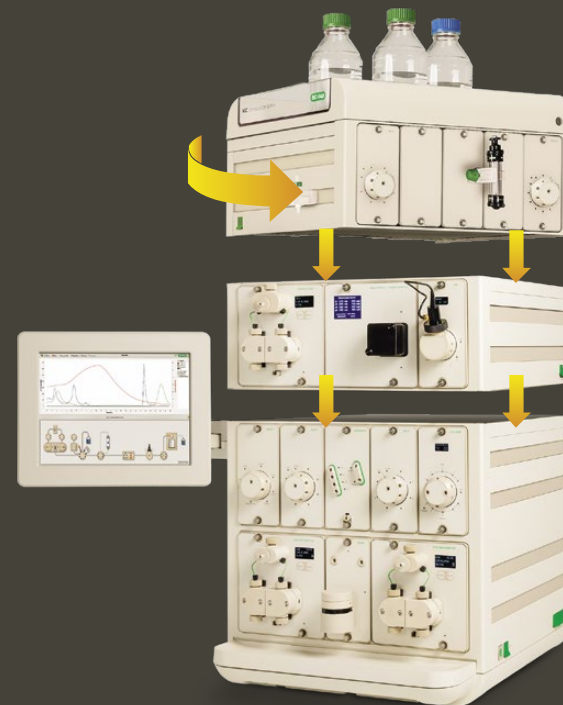
## TRULY CUSTOMIZABLE

The forward-facing modules allow easy-access plumbing of the system. Each system is completely open to redesign, allowing individual customization to meet your needs and application requirements.

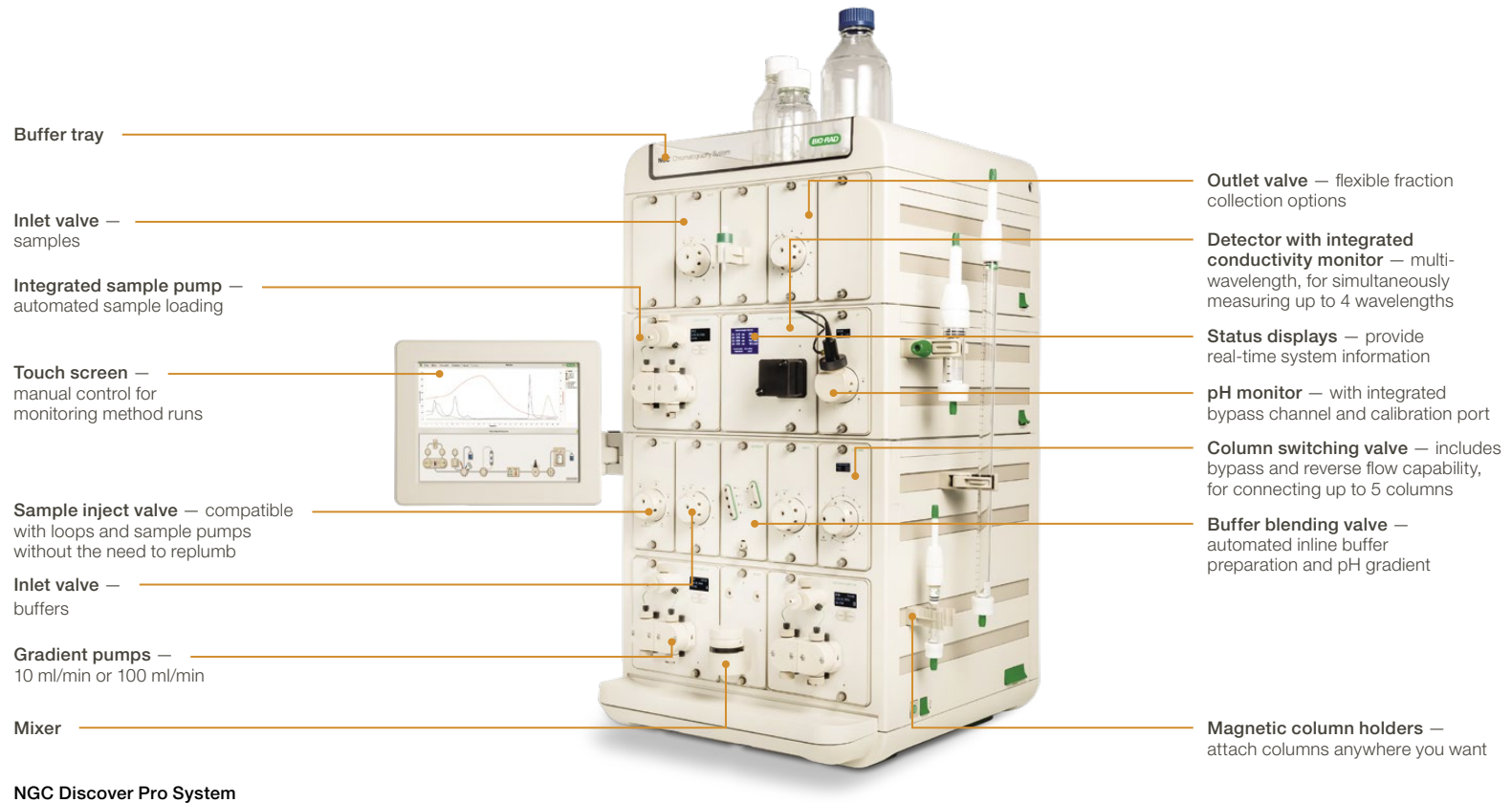


## EXPANDABLE

Expand your system capabilities with the addition of tiers and modules. Modules can be moved and tiers can be rotated, letting you position all components for maximum convenience and efficiency.



# THE NGC LIQUID CHROMATOGRAPHY FAMILY — DESIGNED TO MEET YOUR SPECIFIC PURIFICATION NEEDS



The NGC family of medium-pressure chromatography systems offers a single solution that scales to fit your purification requirements.

The NGC System's truly customizable design provides multiple configurations to align with the requirements of every individual scientist.

The NGC instrument's small footprint means it can be used on a laboratory bench, in a lab refrigerator, or in a coldroom.

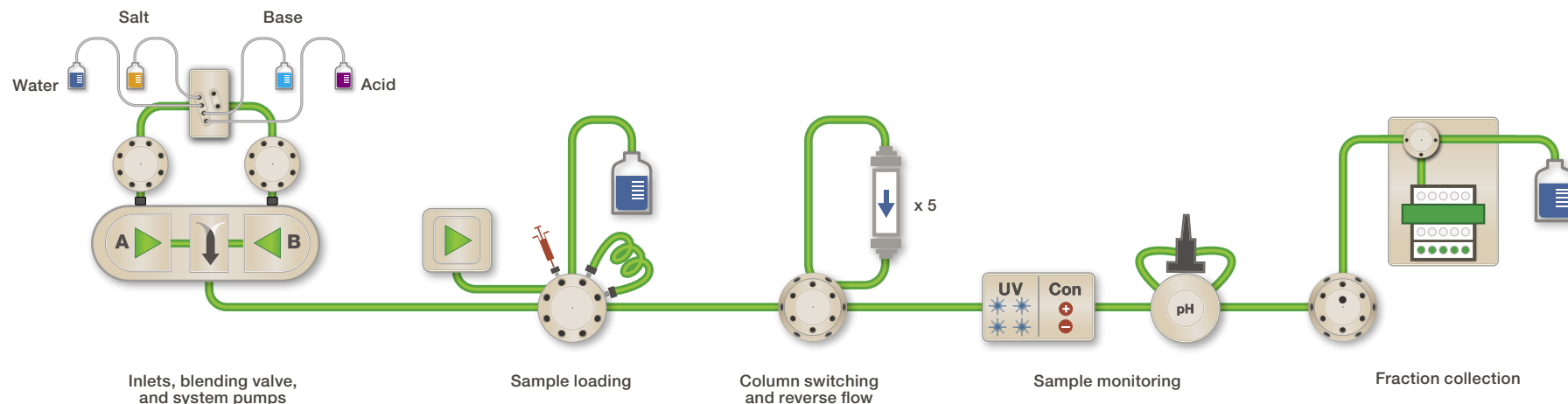
Each system comes with a touch screen, providing instant status updates and manual control of system functions.

The 10 ml/min and 100 ml/min preconfigured instruments — available as the NGC Quest Plus, NGC Scout Plus, and NGC Discover Systems — are designed with increasing automation and throughput capabilities to serve a wide range of laboratory needs.

The magnetic column clamps allow you to mount the columns exactly where you want them. This minimizes the benchspace needed for traditional column holders and simultaneously reduces long tubing connections.

The pumps, detectors, column switching valve, and pH monitor all have LED displays to show real-time status and module performance.

# NGC SYSTEM CAPABILITIES SCHEMATIC



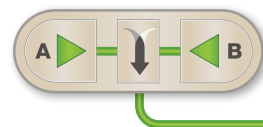
## PUMP INLETS AND AUTOMATED BUFFER BLENDING

### System Pumps

A chromatography system with multiple users, applications, and purification requirements often uses a variety of column types and sizes. The NGC Chromatography System enables you to swap out pump modules to meet your specific requirements.

The NGC family of systems can house up to three high-precision pumps: two system (gradient) pumps and one sample pump, all integrated within the instrument.

The pump modules include a display for real-time monitoring of pump status, flow rate, and pressure readings.



System pumps

### F10 Reciprocating Piston Pump

- Flow rate: 0.001–10 ml/min at 3,650 psi (25.2 MPa)
- Ideal for small-scale preparative purifications

### F100 Reciprocating Piston Pump

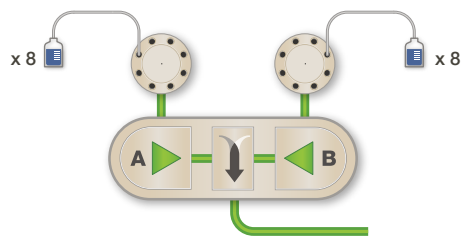
- Flow rate: 0.01–100 ml/min at 1,450 psi (10 MPa)
- Flexible flow rate range
- Ideal for scale-up applications

Catalog #	Description
7884002	NGC F10 Pump Module
7884003	NGC F100 Pump Module

### Buffer Inlet Valves

Optimizing separation conditions can be a time-consuming process, especially if you have to switch out bottles and tubing each time.

The NGC Buffer Inlet Valve Module enables automated switching between buffers to accelerate method development, column cleaning, and regeneration.



- No need to replumb between runs
- 8 buffer inlets per valve
- Inlets can be labeled within the software
- Inlets can be dedicated to cleaning and storage solutions
- Each system pump can have an 8-port inlet valve

System pumps with inlet valves

Catalog #	Description
7884006	<b>NGC Inlet Valve Module</b>

### Buffer Mixer Module

The NGC Mixer Module homogenizes buffers from the two system pumps (A and B) and includes a mixer motor assembly as well as an integrated system pressure sensor.

#### Gradient Flow Rate Range

- F10 pump: 0.001–20 ml/min
- F100 pump: 0.01–200 ml/min

#### Gradient Composition Accuracy

- F10 pump:  $\pm 0.5\%$  (3–97%B, 0.25–10 ml/min up to 3,650 psi/25 MPa)
- F100 pump:  $\pm 0.8\%$  (5–95%B, 1–100 ml/min up to 1,450 psi/10 MPa)

#### Mixer Volume

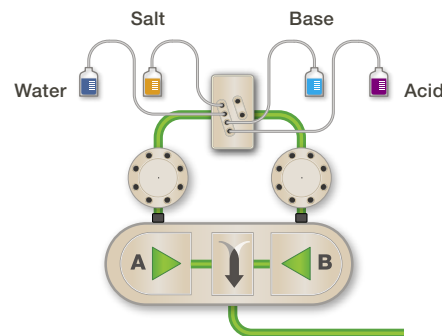
- 263 and 750  $\mu\text{l}$  barrels included with the F10 pump
- 750  $\mu\text{l}$  and 2 ml barrels included with the F100 pump (5 and 12 ml barrels available)

Catalog #	Description
7884018	<b>NGC Mixer Module</b>

### Buffer Blending Valve

Achieving the correct pH required to perform most separations can be challenging. The NGC Buffer Blending Valve speeds up buffer preparation and enables pH scouting by automating inline buffer preparation.

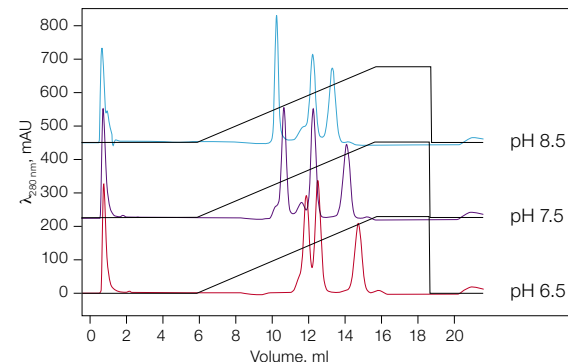
Using acid, base, water, and salt stock solutions, the system can generate specific pH buffers over a linear salt gradient or a pH gradient at a specific salt concentration. The NGC Buffer Blending Valve additionally enables high flow rate gradient applications, doubling the maximum flow rate capability of the NGC System Pumps.



- Enables inline buffer preparation
- Enables pH scouting
- Multiple preprogrammed buffer recipes
- Buffer pH range: 2.7–10.3
- Maintains full gradient capability
- High flow capability
  - F10 pump: 20 ml/min
  - F100 pump: 200 ml/min

System pumps with buffer blending valve

Catalog #	Description
7884010	<b>NGC Buffer Blending Valve Module</b>



pH scouting with a cation exchange standard containing  $\alpha$ -lactalbumin, ribonuclease A, cytochrome C, and lysozyme in a simple buffer mixture automatically titrated to different pHs.

# SAMPLE LOADING OPTIONS

Whether you are loading microliters using a static loop or liters using a dedicated sample pump, the NGC System offers a complete range of options to minimize the risk of sample loss, to automate sample loading, and to prevent the introduction of air into your system.

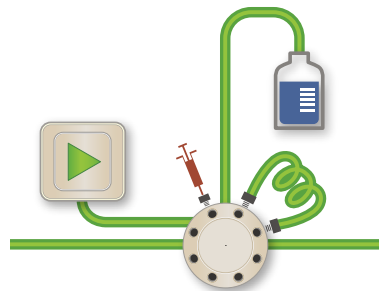
## Sample Injection Valve

- Accurate sample loading
- Compatible with fixed volume loops, variable volume DynaLoop Sample Loops, sample pump, and autosampler
  - No need to replumb
  - Sample volumes:  $\mu\text{L}$  to L

Catalog #	Description
7884007	<b>NGC Sample Inject Valve Module</b>

## Sample Pump Module

Automated sample application can be achieved using the NGC Sample Pump Module.



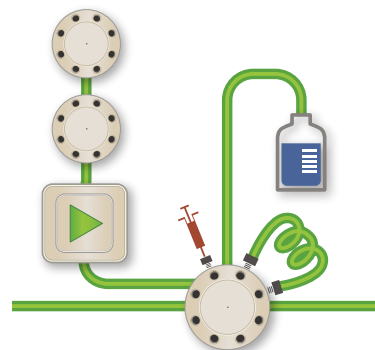
Sample inject valve with sample pump

- Dedicated pump eliminates contamination of system pumps
- Ideal for automated large-volume sample loading directly to the column
- Repetitive accurate sample loading via a fixed volume loop
- Connects directly to sample inject valve without replumbing
- Flow rate: 0.01–100 ml/min at 1,450 psi
- Flow rate accuracy:  $\pm 2\%$
- Sample viscosity range: 0.5–10 cP
- Integrated pressure sensor
- Multiple large-volume samples can be loaded sequentially using up to 2 inlet valves

Catalog #	Description
7884004	<b>NGC Sample Pump Module</b>

## Sample Inlet Valve

Automated sequential sample loading of multiple large-volume samples can be achieved using inlet valves with the sample pump.



Sample pump with two sample inlet valves

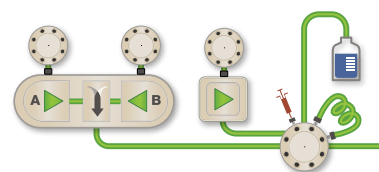
Catalog #	Description
7884006	<b>NGC Inlet Valve Module</b>

- No need to replumb the sample pump between samples
- 8 sample inlets per valve
- Inlets can be labeled within the software
- Up to 2 sample inlet valves can be used with the sample pump

## Air Sensor

Introducing air into your system can damage columns and waste precious samples.

The NGC Air Sensor Module enables the detection of end of buffer and sample, thus protecting your system and saving you time.



Fluidic scheme with air sensors

Catalog #	Description
7885017	<b>NGC Air Sensor Module</b>

- Module accepts up to 4 air sensors
- Compatible with large- and small-bore sensors
- Air sensors map to fluidic scheme and provide real-time sensor status
- Air sensor extension module available for additional sensors

**Note:** Third-party autosamplers and external detectors can be used with the NGC System via the NGC Signal Import Module (catalog #7884016).

# COLUMN SWITCHING AND REVERSE FLOW

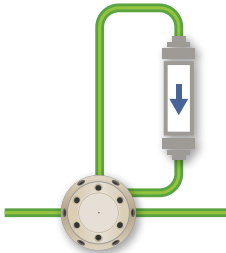
## Column Switching Valve

Manual column scouting to determine optimal purification conditions is complicated and time consuming. The NGC Column Switching Valve enables automated column scouting.

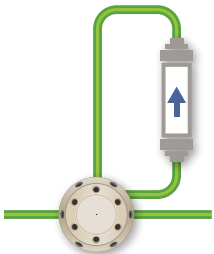
Up to five columns can be connected without the need to replumb the system. The valve also includes an internal bypass function for priming or cleaning your system.

When undertaking affinity chromatography, it is desirable to shorten run times and elute concentrated products. The NGC Column Switching Valve has a reverse flow function ideal for rapid elution and sample concentration from affinity columns. This feature also enhances column cleaning and can increase a column's lifetime.

Avoiding column resin damage from compression is an important concern of researchers. The NGC Column Switching Valve has integrated pressure sensors that measure pre-column and delta-column pressures. This protects the column and resin from compression by triggering the pumps to pause or reduce the flow rate.



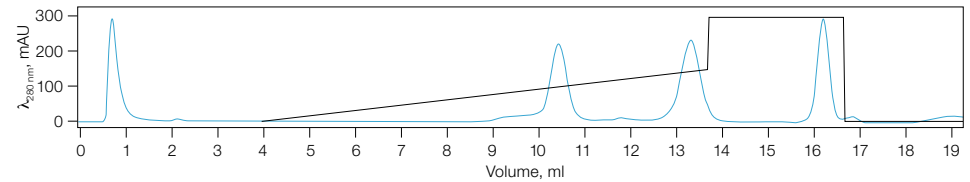
Column switching valve



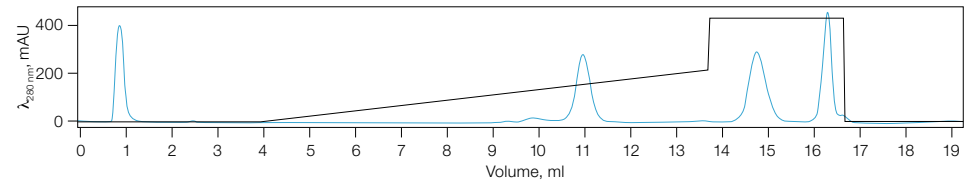
Column switching valve reverse flow

- Automated column/resin scouting
- Connect up to 5 columns
- Real-time display shows pre- and delta-column pressure
- Reverse flow functionality
- Internal bypass flow path
- Integrated pressure sensors
- Column storage
- Install up to 3 column switching valves
- Enables tandem and Multi-D applications
- Use as a loop valve for Multi-D applications

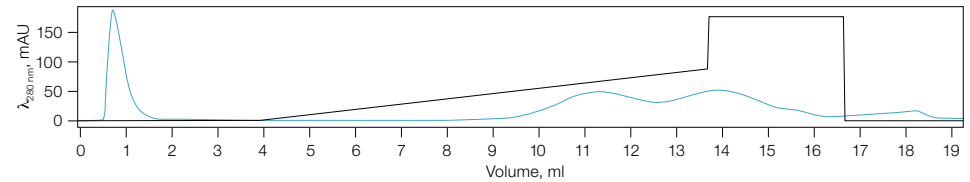
CEX – 8  $\mu\text{m}$



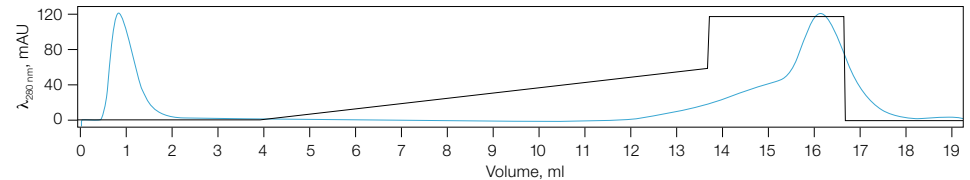
CEX – 10  $\mu\text{m}$



CEX – 50  $\mu\text{m}$



CEX – 70  $\mu\text{m}$



Automated column scouting using the column switching valve with a cation exchange standard containing  $\alpha$ -lactalbumin, ribonuclease A, cytochrome C, and lysozyme in phosphate buffer, pH 6.5, separated over four cation exchange (CEX) resin columns of various particle sizes.

Catalog #	Description
7884012	NGC Column Switching Valve Module, 10 ml
7884026	NGC Column Switching Valve Module, 100 ml

# SAMPLE MONITORING

## Multi-Wavelength Detector

Whether you are running simple protein separations or purifying complex biological samples, you need accurate detection and buffer conductivity monitoring.

The NGC Multi-Wavelength Detector II Module provides highly accurate detection of biomolecules. It is combined with an integrated conductivity monitor (0.01–999 mS/cm).

The multi-wavelength UV/Vis detector adds flexibility to your chromatography system by simultaneously monitoring four wavelengths between 190 and 800 nm in a single module and achieving greater sensitivity in the detection of proteins, peptides, nucleic acids, and chromophores.



Multi-wavelength detector with signal import module

- Integrated conductivity monitor (0.01–999 mS/cm)
- Interchangeable flow cells with 2 mm (preparative), 5 mm (standard analytical), and 10 mm (analytical) path lengths
- Multi-wavelength detector (190–800 nm)

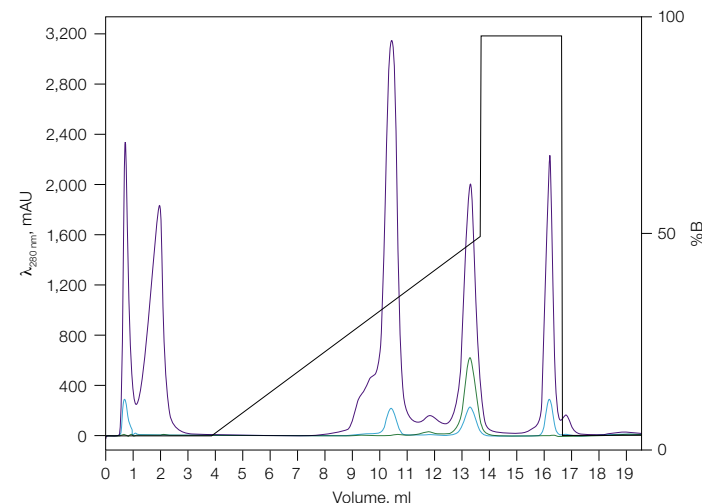
Catalog #	Description
12010343	<b>NGC Multi-Wavelength Detector II Module</b>

## Signal Import Module

Adding external devices to a purification workflow provides the flexibility to increase automation and the amount of information collected. The NGC Signal Import Module enables analog to digital signal conversion and connection to third-party devices.

- Enables automated, accurate, and reproducible small- and large-volume sample injection through third-party autosamplers
- Allows you to gather more information about your protein of interest using an external detector

Catalog #	Description
7884016	<b>NGC Signal Import Module</b>

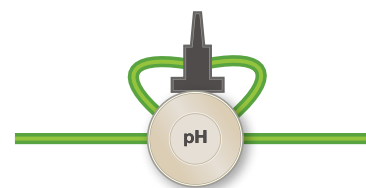


A cation exchange standard containing  $\alpha$ -lactalbumin, ribonuclease A, cytochrome C, and lysozyme was run on a 1 ml ENrich S Column at pH 6.5. The NGC Multi-Wavelength Detector was used to simultaneously monitor peptide bonds at 215 nm ( $\rightarrow$ ), aromatic rings within protein structures at 280 nm ( $\leftarrow$ ), and chromophores at 420 nm ( $\dashrightarrow$ ). This single run provided confirmation of the presence or absence of these compounds before any post-run analysis was performed.

## pH Valve Module

The ability to determine and monitor pH is essential for method development and for most purification applications.

The NGC pH Valve Module has an integrated flow cell and pH electrode for accurate inline pH monitoring. It has a bypass mode to take the probe offline without the need for any replumbing.



pH valve

- Accurate inline pH monitoring (pH 1–14)
- Calibration port for in situ calibration
- Integrated bypass valve
- Reference and pH electrodes sealed in a single body to avoid damage from drying
- Temperature-compensated pH determination

Catalog #	Description
7884011	<b>NGC pH Valve Module</b>

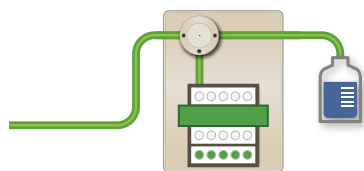


# FRACTION COLLECTION

Researchers require a versatile and easy-to-use fraction collector for their purification needs. The following fraction collection options are compatible with all NGC Systems.

## NGC Fraction Collector

The NGC Fraction Collector provides automated collection options for analytical and preparative chromatography applications. As Bio-Rad's premier fraction collector, the NGC Fraction Collector is capable of performing basic to complex fraction collection schemes and can be used at flow rates up to 200 ml/min. It supports numerous rack and tray combinations, from microplates and tubes to bottles and carboys.



NGC Fraction Collector



- Enables multi-user support with increased capacity to accommodate multiple racks for multivessel collection
- Achieves production batch capacity by collecting up to 80 unlimited volume fractions
- Supports flow rates up to 200 ml/min
- Allows accurate vessel positioning down to millimeter precision using factory-programmed firmware
- Collect with 2 NGC Fraction Collectors or 1 NGC Fraction Collector and the BioFrac Fraction Collector
- Gain added versatility when used in conjunction with up to two 12-port outlet valves

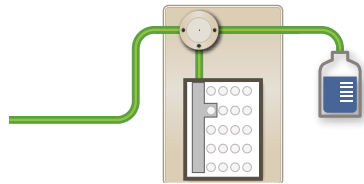
Catalog #	Description
17002070	<b>NGC Fraction Collector with Racks</b>

# FRACTION COLLECTION (cont.)

## BioFrac Fraction Collector

The BioFrac Fraction Collector is ideal for both small- and large-scale preparative chromatography applications.

It offers flexible collection rack options, including 4 x 96-well plates, 0.5–2.0 ml microtubes, larger-volume tubes ranging in diameter from 12 to 20 mm, and preparative racks for collection in bottles.



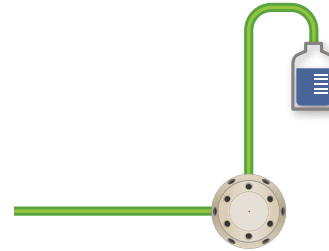
BioFrac Fraction Collector

- Ideal for small- and large-scale preparations
- Versatile sample collection capability from 96-well plate to 20 mm diameter tubes
- Stand-alone operation
- Added versatility when used in conjunction with up to two 12-port outlet valves



Catalog #	Description
7410002	<b>BioFrac Fraction Collector</b>

## Outlet Valve

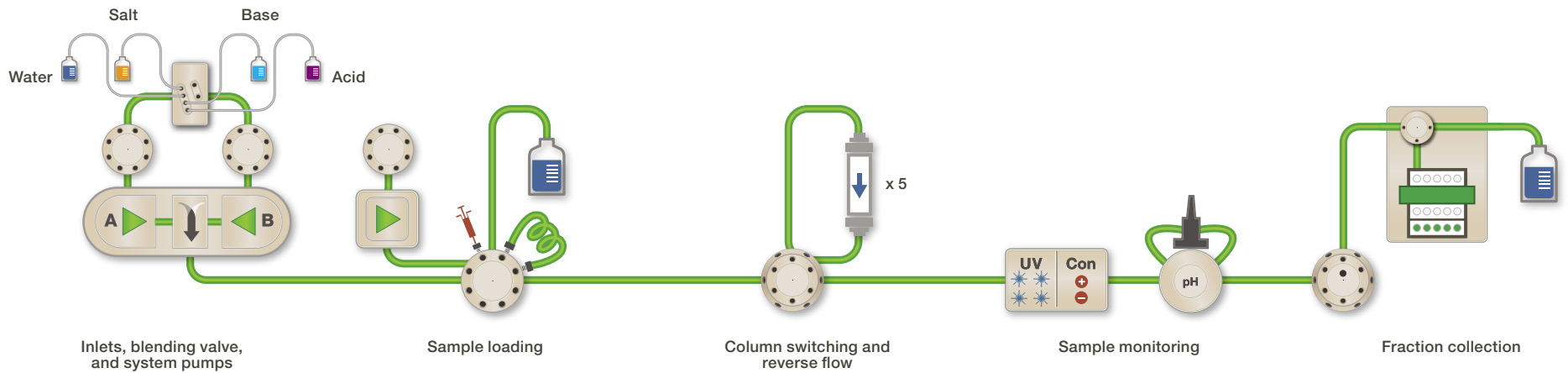


Outlet valve

Catalog #	Description
7884013	<b>NGC Outlet Valve Module</b>

- Collect up to 12 large-volume fractions with single valve
- Collect up to 23 large-volume fractions with two valves
- Collect variable fraction sizes with the BioFrac Fraction Collector
- Connect up to 2 fraction collectors to the NGC System
- Redirect samples for Multi-D methods

# CONFIGURE YOUR NGC SYSTEM



Inlets, blending valve, and system pumps

Sample loading

Column switching and reverse flow

Sample monitoring

Fraction collection

Inlets, blending valve, and system pumps	Sample loading	Column switching and reverse flow	Sample monitoring	Fraction collection
<input type="checkbox"/> F10 Pump, 10 ml/min <input type="checkbox"/> F100 Pump, 100 ml/min	<input type="checkbox"/> Sample Pump Module	<input type="checkbox"/> Column Switching Valve Module Up to 3 per system	<input type="checkbox"/> Multi-Wavelength Detector II	<input type="checkbox"/> NGC Fraction Collector
<input type="checkbox"/> Inlet Valve Module (buffer) Up to 2 per system	<input type="checkbox"/> Inlet Valve Module (sample) Up to 2 per system		<input type="checkbox"/> pH Valve Module	<input type="checkbox"/> BioFrac Fraction Collector Autosampler
<input type="checkbox"/> Buffer Blending Valve Module			<input type="checkbox"/> Signal Import Module	<input type="checkbox"/> Outlet Valve Module Up to 2 per system

Module Selection Table

Visit [bio-rad.com/NGC](https://www.bio-rad.com/NGC) for more information.

BIO-RAD is a trademark of Bio-Rad Laboratories, Inc. in certain jurisdictions.  
All trademarks used herein are the property of their respective owner.



**Bio-Rad  
Laboratories, Inc.**

Life Science  
Group

**Website** [bio-rad.com](https://www.bio-rad.com) **USA** 1 800 424 6723 **Australia** 61 2 9914 2800 **Austria** 00 800 00 24 67 23 **Belgium** 00 800 00 24 67 23 **Brazil** 4003 0399 **Canada** 1 905 364 3435 **China** 86 21 6169 8500  
**Czech Republic** 00 800 00 24 67 23 **Denmark** 00 800 00 24 67 23 **Finland** 00 800 00 24 67 23 **France** 00 800 00 24 67 23 **Germany** 00 800 00 24 67 23 **Hong Kong** 852 2789 3300 **Hungary** 00 800 00 24 67 23  
**India** 91 124 4029300 **Israel** 0 3 9636050 **Italy** 00 800 00 24 67 23 **Japan** 81 3 6361 7000 **Korea** 82 2 3473 4460 **Luxembourg** 00 800 00 24 67 23 **Mexico** 52 555 488 7670 **The Netherlands** 00 800 00 24 67 23  
**New Zealand** 64 9 415 2280 **Norway** 00 800 00 24 67 23 **Poland** 00 800 00 24 67 23 **Portugal** 00 800 00 24 67 23 **Russian Federation** 00 800 00 24 67 23 **Singapore** 65 6415 3188 **South Africa** 00 800 00 24 67 23  
**Spain** 00 800 00 24 67 23 **Sweden** 00 800 00 24 67 23 **Switzerland** 00 800 00 24 67 23 **Taiwan** 886 2 2578 7189 **Thailand** 66 2 651 8311 **United Arab Emirates** 36 1 459 6150 **United Kingdom** 00 800 00 24 67 23

