
ZOE Fluorescent Cell Imager

Instruction Manual

Catalog #1450031



BIO-RAD

Bio-Rad Technical Support

The Bio-Rad Technical Support department in the U.S. is open Monday through Friday, 5:00 AM to 5:00 PM, Pacific time.

Phone: 1-800-424-6723, option 2

Email: Support@bio-rad.com (U.S./Canada only)

For technical assistance outside the U.S. and Canada, contact your local technical support office or click the Contact us link at bio-rad.com.

Legal Notices

No part of this publication may be reproduced or transmitted in any form or by any means, electronic or mechanical, including photocopy, recording, or any information storage or retrieval system, without permission in writing from Bio-Rad.

Bio-Rad reserves the right to modify its products and services at any time. This guide is subject to change without notice. Although prepared to ensure accuracy, Bio-Rad assumes no liability for errors or omissions, or for any damage resulting from the application or use of this information.

BIO-RAD is a trademark of Bio-Rad Laboratories, Inc.

All trademarks used herein are the property of their respective owner.

Copyright © 2020 by Bio-Rad Laboratories, Inc. All rights reserved.

Bio-Rad Laboratories Resources

Bio-Rad provides many resources for scientists. Bio-Rad resources and how to locate what you need are listed in the following table.

Bio-Rad resources.

Resource	How to Contact
Local Bio-Rad Laboratories representatives	Find local information and contacts on the Bio-Rad Laboratories, Inc. website by selecting your country on the home page (bio-rad.com). Find the nearest international office listed on the back of this manual.
Technical support scientists	Bio-Rad's technical support scientists provide our customers with practical and expert solutions. To find local technical support on the phone, contact your nearest Bio-Rad office. For technical support in the United States and Canada, call 1-800-424-6723 (toll-free), option 2.
Service support engineers	Maintenance and repairs should be carried out only by authorized service support engineers. For service support in the United States and Canada, call 1-800-424-6723 (toll-free), option 2.
Technical notes and literature	Go to Bio-Rad's website (bio-rad.com). Type a term in the Search box and select the Documents tab to find links to literature.

Warranty

The ZOE Fluorescent Cell Imager and associated accessories are covered by a standard Bio-Rad warranty. Contact your local Bio-Rad Laboratories office for the details of the warranty.

Safety Use Specifications and Compliance

A **Warning!** label in this manual warns you about sources of injury or harm, including risk of electrical shock.

Warning! Do not attempt to repair or remove the outer case of the ZOE inverted cell imager or other accessories. If you open this instrument, you put yourself at risk for harm to body or equipment from electrical shock.

This instrument has been tested and found to be in compliance with all applicable requirements of the following safety and electromagnetic standards.

Environmental conditions for safe operation of the ZOE Fluorescent Cell Imager.

Transient category	Installation category II
Operating power	100–240 VAC
Frequency	50/60 Hz
Electrical input	24 V DC, 100 W
Installation site	Indoor use only
Operating temperature	10–31°C
Maximum relative humidity	20–80%
Altitude	<2,000 m
Pollution degree	2
Degree of protection	IPX0

Note: Do not store or operate the unit near a sink as contact with water could cause electric shock.

Unit is heavy, do not store or operate it at the edge of a laboratory bench. Unit must be in upright position during operation.

Condensation will form on any object when the temperature of the object is at or below the dew point temperature of the air surrounding the object. If the instrument is taken from a cold environment to a warmer environment, allow the instrument to equilibrate to above the dew point temperature before operating.

Do not tip the unit over while a sample is located on the sample stage. This could cause accidental spillage of sample into the optical and electronic systems of the ZOE Fluorescent Cell Imager, causing electrical shock and rendering the unit inoperable.

Do not operate if the glass layer on the LCD screen is broken. This could injure the operator.

To prevent injury from movement of the motorized stage, do not put fingers into the stage opening while the unit is powered on.

The angle on the LCD screen is adjustable. Keep fingers away from the back of the screen when folding down the screen. The ZOE Fluorescent Cell Imager is factory calibrated; no further calibration is needed.

Do not connect the ZOE Fluorescent Cell Imager to a PC. It may render the device's operating system unusable.

Safety Compliance

This instrument has been tested and found to be in compliance with all applicable requirements of the following safety and electromagnetic standards:

- EN 61010-1:2010 — Electrical Equipment for Measurement, Control, and Laboratory Use
- UL Std No. 61010-1:2012 — Electrical Equipment for Measurement, Control, and Laboratory Use, Part 1: General Requirements
- CAN/CSA C22.2 No. 61010-1-12 — Safety Requirements for Electrical Equipment for Measurement, Control, and Laboratory Use, Part 1: General Requirements
- IEC 61010-1:2010 — Safety Requirements for Electrical Equipment for Measurement, Control, and Laboratory Use, Part 1: General Requirements
- IEC62471 Photobiological Safety of Lamps and Lamp Systems
- EN62471 Photobiological Safety of Lamps and Lamp Systems

Electromagnetic Compatibility (EMC)

- F.C.C. Title 47 Part 15B as a Class A digital device
- IEC/EN61326-1 Class A Electrical Equipment for Measurement, Control, and Laboratory Use — General Requirements

FCC Warning and Notes

- **Warning!** Changes or modifications to this unit not expressly approved by the party responsible for compliance could void the user's authority to operate the equipment
- **Note:** This equipment has been tested and found to comply with the limits for a Class A digital device, pursuant to part 15 of the FCC Rules. These limits are designed to provide reasonable protection against harmful interference when the equipment is operated in a commercial environment. This equipment generates, uses, and can radiate radio frequency energy and, if not installed and used in accordance with the instruction manual, may cause harmful interference to radio communications. Operation of this equipment in a residential area is likely to cause harmful interference, in which case the user will be required to correct the interference at the user's own expense

- **Note regarding FCC compliance:** Although this design of instrument has been tested and found to comply with Part 15, Subpart B, of the FCC Rules for a Class A digital device, please note that this compliance is voluntary, as the instrument qualifies as an “exempted device” under 47 CFR 15.103(c) in regard to the cited FCC regulations in effect at the time of manufacture
- **Note regarding Canadian EMC compliance:** This equipment does not generate radio frequencies that exceed limits applicable to Class A digital devices as outlined in the Canadian Department of Communications regulations on radio interference.
Le present appareil numerique n’emet pas de bruits radioelectrique depassant les limites applicables aux appareils numeriques de classe A prescrites dans le reglement sur le brouillage radioelectrique edicte par le Ministere des Communications du Canada

Canada Warning and Notes

This ISM device complies with Canadian ICES-001.

Cet appareil ISM est conforme à la norme NMB-001 du Canada.

This Bio-Rad instrument is designed and certified to meet EN61010 and the EMC requirements of EN61326 (for Class A) safety standards. Certified products are safe to use when operated in accordance with the instruction manual. This instrument should not be modified or altered in any way. Alteration of this instrument will cause the following results:

- Void the manufacturer’s warranty
- Void the EN61010 safety certification
- Create a potential safety hazard

Bio-Rad Laboratories is not responsible for any injury or damage caused by the use of this instrument for purposes other than those for which it is intended, or by modifications of the instrument not performed by Bio-Rad Laboratories or an authorized agent. We strongly recommend that you follow the safety specifications listed in this section and throughout this manual. Use only the supplied power cord in the instrument, making sure to choose the plug adaptor that corresponds to the electrical outlets in your region.

Table of Contents

	Bio-Rad Laboratories Resources	III
	Warranty	III
	Safety Use Specifications and Compliance	III
Section 1	Introduction	1
	Instrument Overview	2
	Graphical User Interface (GUI)	2
	Specifications	3
	System Components	4
Section 2	Setting Up the Instrument	5
	Camera	5
	Preferences	5
	Date and Time	5
	System	6
	Firmware Update	6
Section 3	Viewing Cells and Capturing and Processing Cell Images	7
	Position Mode	7
	Live Mode	7
	Motorized Stage and Field of View	7
	Using the Brightfield Channel	8
	Using the Fluorescent Channels	10
	Image Capture	11
	Gallery Mode	12
	Viewing Captured Images	12
	Image Management	14
	Selecting Image Files	14
	Reverse Selection	15
	Exporting Image Files	15
	Deleting Image Files	16
	Merge Mode	16
	Capturing Images for Multicolor Merge Mode	17
Section 4	Maintenance and Troubleshooting	19
	Cleaning the ZOE Fluorescent Cell Imager	19
	Cleaning the Instrument Body	19
	Cleaning the LCD Screen	19
	Cleaning the Objective Lens	19
	Battery	20
Section 5	Software Notices and Terms	21
Section 6	Ordering Information	31

Section 1

Introduction

The ZOE Fluorescent Cell Imager is an inverted imaging system with a brightfield and three fluorescent channels (emitting in blue, green, and red colors), suitable for routine cell culture and imaging applications. All channels are fully integrated and optimized for most commonly used fluorescent proteins and dyes; no calibration or installation is needed. It is a stand-alone instrument and a PC is not needed to operate it.

The intuitive touch screen allows researchers to visualize their samples and capture cell images with the integrated digital complementary metal oxide semiconductor (CMOS) camera. Images stored in the internal memory can be edited, overlaid into multicolor merges, and/or exported to a USB flash drive using one of the two USB ports. The integrated light shield removes the need for a darkroom and allows visualization of fluorescence in ambient light on the bench, where researchers work with cells. The screen viewing angle can be adjusted easily and optimized to a user's body height.

Each LED light source provides thousands of hours of reliable illumination that are instantly ready after power-on. They provide cool, even, and continuous illumination; their brightness can be adjusted by the user to reduce sample photobleaching.

Focusing is conducted manually using coaxial coarse/fine focus knobs located on the instrument base in an ergonomically deduced position, thus minimizing the strain on the user's hands.

The ZOE Fluorescent Cell Imager's 20x lens is mounted in a proprietary manner that results in a large field of view, one that is approximately equivalent to that of a 4x objective lens (0.70 mm²). Using the pinch-to-zoom gesture, researchers can instantly change magnification while retaining resolution of 1 μ m.

Thanks to the large field of view and a motorized stage (up to 6 mm of travel), a large sample area can be visualized rapidly. This attribute is useful when assessing transfection efficiency or cell confluency. The direction and speed of the stage's movement are controlled through the touch screen.

Instrument Overview

The front panel of the ZOE Fluorescent Cell Imager (Figure 1) includes:

- **Screen** — 10.1 in., high-resolution, color LCD touch screen with antiglare and antifingerprint coatings; screen angle can be adjusted to optimize viewing experience
- **Light shield** — allows use of fluorescent channels in ambient light
- **Sample stage** — positioned on top of the instrument base, sample stage is large enough to fit any of the commonly used cell culture vessels
- **Objective opening** — located in the center of the sample stage, objective lens is below the opening
- **USB port** — for connecting USB flash drive
- **Indicator light** — glows green when instrument is powered on. If light is not on, instrument is powered off

The right side panel (Figure 1) includes:

- **Power switch** — for turning the instrument on and off
- **Focus knobs** — for manually adjusting image focus; outer knob adjusts coarse focus, inner knob adjusts fine focus

The left side panel includes:

- **Focus knobs** — for manually adjusting image focus; outer knob adjusts coarse focus, inner knob adjusts fine focus

The rear panel (Figure 1, inset) includes:

- **USB port** — for connecting USB flash drive
- **HDMI port** — for connecting a projector or external monitor via HDMI cable
- **Power inlet** — for connecting the imager to an electrical outlet via the supplied power cord (select the cable with appropriate plug adaptor for your region)

Note: Hold the power cord with its flat side facing down; push into the power inlet without blocking the locking mechanism. To remove, pull the locking mechanism to unlock the cable. Pulling the cable without releasing the locking mechanism can result in instrument damage.

Graphical User Interface (GUI)

The touch-screen commands include four functions:

- **Position** — select the target sample area for cell imaging; view of the entire vessel is shown on the LCD screen with the center of the crosshair located above the objective lens (Figure 2)
- **Live** — view samples using brightfield (Figure 3) or any of the three fluorescent channels; use this mode for image acquisition
- **Gallery** — for accessing captured images stored in the internal memory
- **Merge** — for creating multicolor image overlays

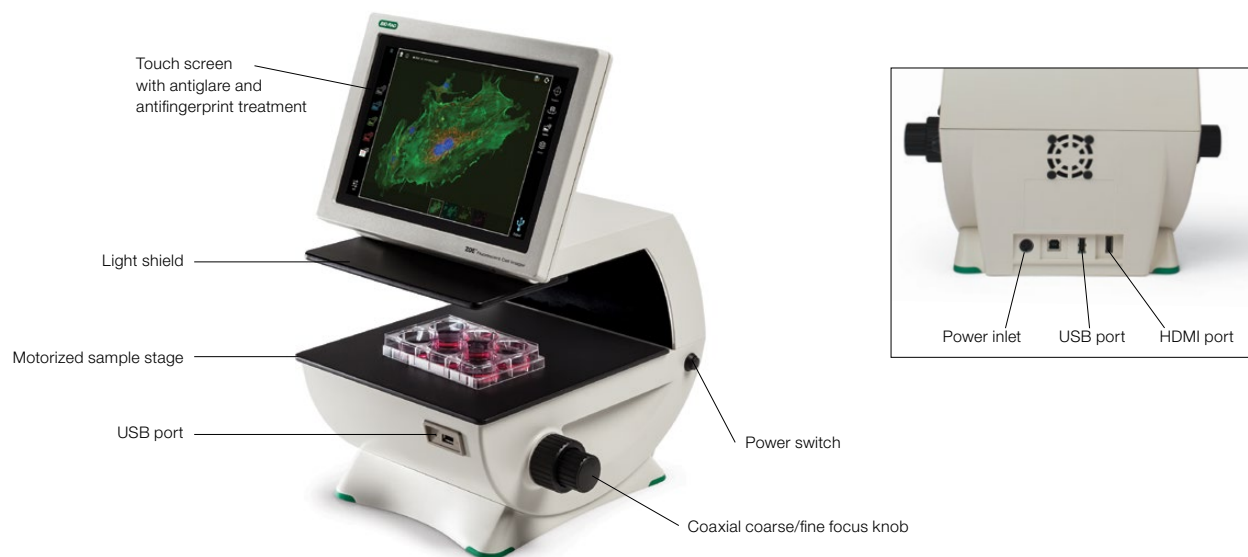


Fig. 1. Elements of the ZOE Fluorescent Cell Imager. Though not shown in full instrument image, both left and right sides have focus knobs (they can be seen in the inset image on the back of the instrument).

Specifications

The specifications for the ZOE Fluorescent Cell Imager are shown in Table 1.

Table 1. ZOE Fluorescent Cell Imager specifications.

Color channels	Brightfield, blue, green, and red fluorescence channels
Illumination	UV LED for blue channel Blue LED for green channel Green LED for red channel
Excitation	Blue channel: 355/40 nm Green channel: 480/17 nm Red channel: 556/20 nm
Emission	Blue channel: 433/36 nm Green channel: 517/23 nm Red channel: 615/61 nm
Numerical aperture	0.40
Working distance	7 mm
Objective	20x plan achromatic
Display magnification	175x
Digital zoom magnification	700x
Motorized stage	6 mm travel in X, Y directions, touch-screen control of travel speed and direction
Field of view	0.70 mm ²
Camera	Monochrome, 12-bit CMOS, 5 megapixels
Image format	JPEG, TIFF, RAW (8- and 12-bit)
Internal memory	16 GB
Focus	Coarse and fine; manual adjustment
Stand-alone instrument	Yes
LCD monitor	10.1 in., color, LCD, touch screen with antiglare and antifingerprint treatment, 1,280 x 800 pixels image resolution, 80–180° angle tilt range
Ports	2 USB ports
Dimensions	33 x 32 x 30 cm (13 x 12.6 x 11.8 in.)
Weight	9 kg (19.8 lb)

* Brightfield channel is illuminated with green LEDs that improve image contrast by reducing chromatic aberration. Photobleaching due to this green light source is comparable to that encountered with a regular white light.

Note: User interface controls for individual channels are labeled according to the emission colors (blue, green, and red).

System Components

Catalog #1450031 includes:

- ZOE Fluorescent Cell Imager
- Power cord
- USB flash drive
- Instruction manual
- Quick guide

Unpacking the System Components

1. Unpack the ZOE Fluorescent Cell Imager carefully. Remove all packaging materials and store them for future use. Examine the instrument carefully for any damage incurred during transit. Ensure that all parts of the instrument listed above are included with the product. If any item is missing or damaged, contact your local Bio-Rad office.
2. Place the imager in an upright position on a dry, level surface.
3. Thanks to its light shield, the ZOE Fluorescent Cell Imager can be used in ambient light; darkroom operation is not required. However, it is not designed to be operated in direct sunlight.
4. Insert the supplied power cord into the instrument with its flat side facing down and without blocking the locking jacket.


Note: To remove, pull the locking jacket to unlock the cable. Pulling the cable without unlocking this mechanism can result in instrument breakage.


5. Plug the power cord into the appropriate electrical outlet and the instrument will power on. The loading screen displays. After the loading sequence is completed the Position mode will appear onscreen.

Note: Turning the unit off by pressing the Power off button results in only partial shutoff. For complete power-off, remove power cord from electrical outlet.

Section 2

Setting Up the Instrument

Menus on the touch screen can be customized. To change the default instrument settings, tap the  icon located in the upper left corner of the screen (Figure 2) and select **Settings**.

1. In the Settings window that opens, tap the option you want to modify.
2. Make the desired modifications and tap  to exit.

Options on the following menu can be modified.

Camera

The default values for Gain, Exposure time, LED Intensity, and Contrast can be changed. The instrument must be powered off and turned back on for new values to become active.

Preferences

The following options can be modified:

Image File Format — captured images are stored as JPEGs. Alternatives include TIFF and RAW, but the large files of these formats slow down the operating system.

Image File Name Format — default file name format is *Color_Serial number_Time stamp*. Alternatively, *Color_Prefix_Time stamp* allows you to use a custom prefix (for example, HeLa).

Add scale bar to captured image — tap **Yes** to add a scale bar to captured images; tap **No** to disable the function.

Attach underlying single-color images to merge — tap **Yes** to export underlying single-color images along with the merge file; tap **No** to disable the attach function during export to a USB flash drive.

Automatic export of image files to USB drive — enable automated image export to inserted USB flash drive. Images will be saved to both the USB drive and the internal memory.

Sleep Mode — determine how long the unit should stay fully on after a user interaction. In sleep mode, certain functionalities are turned off to preserve power. The ZOE Fluorescent Cell Imager comes fully back on within 20 seconds when the screen is touched.

Date and Time

The date/time stamp is used to track images stored in the internal memory. The date and time should be set before using the imager. Resetting the date/time after the cell imager has been used will not affect already stored images.

System

The following information is available in this menu option:

- Legal information
- Android version
- Kernel version
- Vision board driver version
- Driver board firmware version
- Galileo Software version
- Firmware update
- System test posting

Firmware Update

To update firmware on the instrument:

1. Insert a USB flash drive with the firmware update file into a USB port. The firmware file must be saved in the root directory of the USB flash drive.
2. Tap **Firmware update** in the System option of the Settings menu.
3. When the instrument recognizes and validates the firmware file, it proceeds with the update.

Note: If the USB flash drive with the firmware file is not inserted, a message prompting you to do so will be displayed. If the update file is not saved in the root directory, a “No update file present.” message displays.

4. Tap **Enter** to continue updating.
5. When the update is successfully completed, the ZOE Fluorescent Cell Imager automatically restarts.

Note: Three types of update files may be available: a Vision board driver update, Driver board firmware, and/or ZOE Fluorescent Cell Imager Galileo Software.

If both the Vision board driver and ZOE Software are updated at the same time, the Vision board driver will be updated first. When that is completed the instrument automatically restarts itself and repeats steps 2–5 to update the ZOE Software.

If the Driver board firmware is also present, it and any other update files are automatically updated without repeating steps 2–5.

Section 3

Viewing Cells and Capturing and Processing Cell Images

Tap the appropriate icon, located on the right side of the touch screen (Figure 2), to access the Position, Live, Gallery, or Merge functions.

Position Mode

The unit automatically goes into Position mode when it is powered on. The display area of the touch screen shows the top view of the sample stage. The red crosshair is always over the objective lens (Figure 2) and represents the actual imaging spot. Tap the **Center** icon to return stage to the home position (X,Y; 0,0) at any time.

Note: If the stage returns to center while you are viewing a sample, the sample viewing area will change. To prevent accidental overlaying of images captured from different locations of the sample, all images previously selected for merge (multicolor images) are cleared whenever the stage is centered.

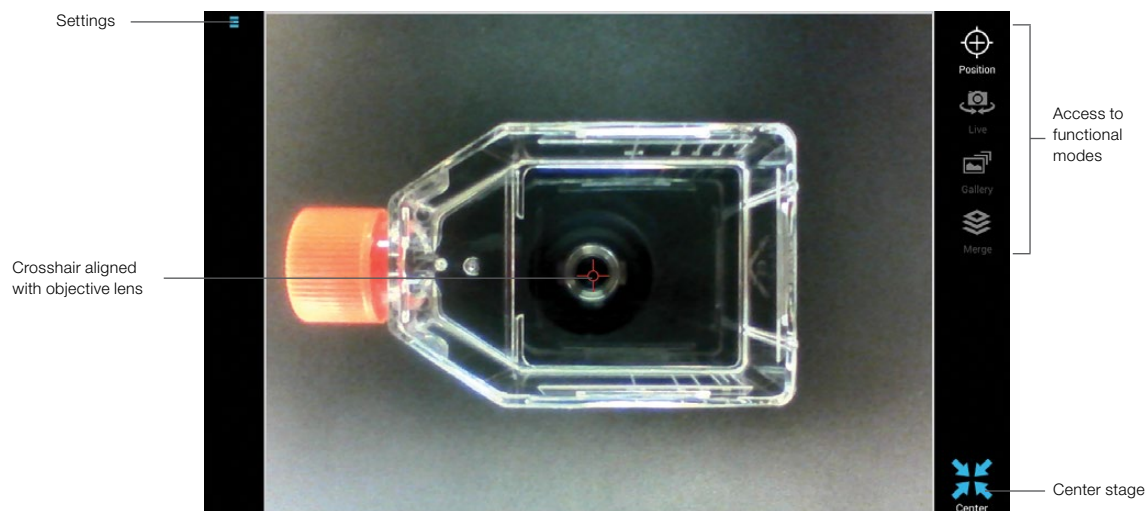


Fig. 2. Elements of the touch screen when the ZOE Fluorescent Cell Imager is powered on. White icon shows imager is in Position mode; other modes are grayed out.

Live Mode

The Live function is used for viewing samples illuminated in one of the four channels (brightfield or one of the three fluorescent channels) and for acquiring cell images.

Motorized Stage and Field of View

The ZOE Fluorescent Cell Imager's motorized stage, with up to 6 mm of travel, enables rapid visualization of a large sample area. Direction and speed of the stage movement are controlled through the touch screen, and display magnification can be instantly increased using the pinch-to-zoom gesture. X and Y coordinates (Figure 3) are updated as the stage moves. Use the Center icon (Figures 2 and 3) to return the stage to the Home position (X,Y; 0,0). Tap the **Stage/Zoom** lock to lock the sample position and magnification during acquisition of images for multicolor merge. When done, tap the lock again to unlock.

Note: Because you might need to refocus when you switch to a different channel, the Stage/Zoom lock does not lock the focus.

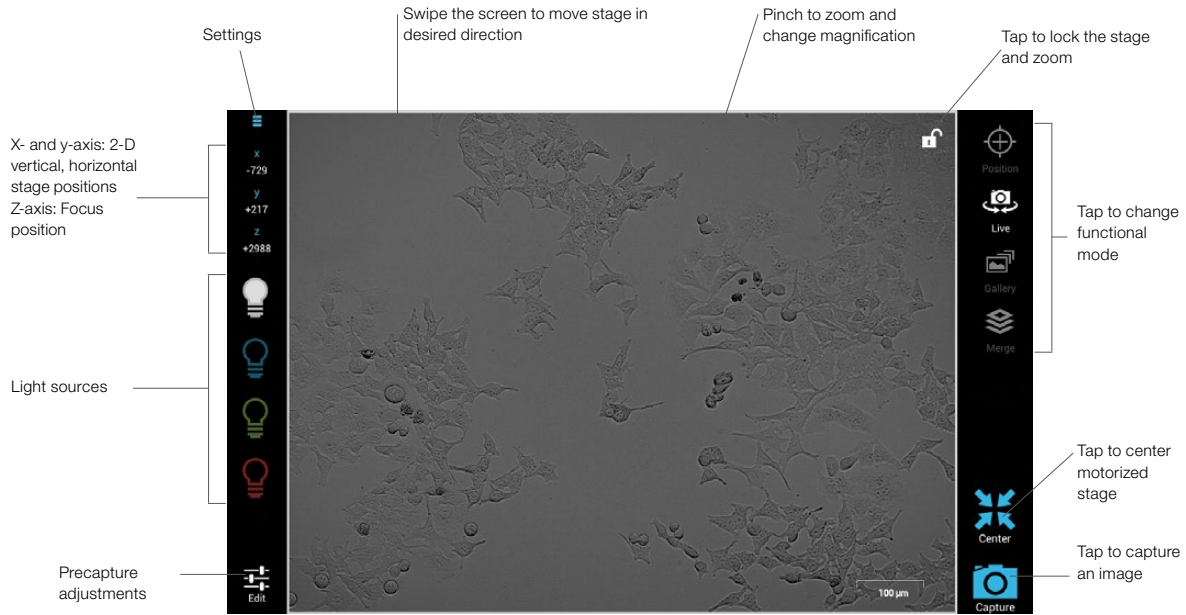


Fig. 3. User controls available in Live mode.

Using the Brightfield Channel

A control panel located on the left side of the screen contains controls for switching on and off light sources for the individual imaging channels (Figure 3). For improved image contrast, a ring of green LEDs is the light source in the brightfield channel. ZOE uses a monochrome camera and the resulting brightfield images are black and white.

Tap the illumination control icon (Figure 4) to turn the LED light source on, tap again to turn it off.



Fig. 4. Brightfield channel light source on/off.

Note: Photobleaching due to this green light source is comparable to that of a regular white light. The wavelength used does not cause the red fluorophore to fluoresce or photobleach.

Focus position indicator on the left side of the touch screen shows the z-axis position number. The number is updated during focusing (Figure 3). Knowing the approximate z-axis number for the tissue culture vessels you use can speed up focusing (Table 2).

Table 2. Z-axis position range of tissue culture vessels.

Vessel Type	Z-Axis Position
Microscope slide	720 ± 100
6-well plate	2,000 ± 100
12-well plate	2,100 ± 100
24-well plate	1,900 ± 100
48-well plate	2,000 ± 100
96-well plate	3,500 ± 200
T25 flask	1,800 ± 200
T75 flask	2,500 ± 200
T225 tissue culture flask	3,200 ± 200
Small petri dish	1,200 ± 200
Large petri dish	1,100 ± 200

Optimizing Imaging Parameters in Brightfield Channel

Use the Edit menu to adjust these precapture parameters (Figure 5): Gain, LED Intensity, and Contrast values; Exposure time (msec); and quadrant illumination. Drag the slider bar to adjust a parameter. Tap the – and + controls at either end of each slider bar for fine adjustments.

- **When searching for sample** — increase **Gain** value for brighter signal; reduce **Exposure** time for faster frame rate
- **Once the sample is identified and ready to be captured** — lower **Gain** value to reduce background noise; increase **Exposure** time to regain signal intensity
- **To further increase brightness** — start by increasing **LED Intensity** value; follow by increasing **Exposure** time if needed
- **To reduce nonspecific background signal** — increase **Contrast** value

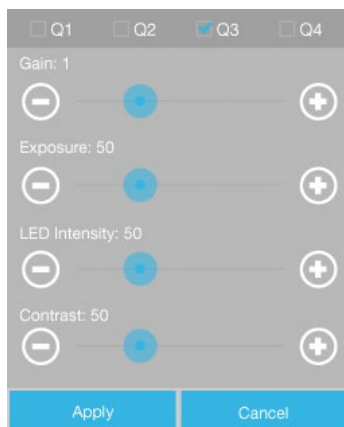


Fig. 5. Edit controls in the brightfield channel.

Improving Image Contrast of Brightfield Channel

A ring of green LEDs is used as a light source in the brightfield channel. Using a green light source reduces chromatic aberration and results in improved image contrast compared to white light.

The **Q1, Q2, Q3, and Q4 checkboxes**, at the top of the brightfield channel edit controls panel (Figure 5), toggle quadrants of the ring of LEDs on and off. This control can be used to achieve phase-like image contrast. Lighting only one quadrant shifts the direction of the light, resulting in oblique illumination. The combination of on and off quadrants that provides the best imaging performance depends on the sample.

To improve the image contrast of the brightfield channel:

1. Start by turning off three quadrants, leaving only one quadrant lit. To turn off quadrants, tap the checkboxes and remove the checkmarks. For example, leave on Q2 and turn off Q1, Q3, and Q4.

Note: If you want to optimize contrast by turning on two quadrants, they should be adjacent quadrants. For example, leave on Q1 and Q2, or Q2 and Q3, etc.
2. The imaging area becomes significantly darker when only one quadrant is lit. To compensate for loss of illumination from the unlit quadrants, increase the Gain slightly and then adjust the LED intensity and, if needed, the Exposure time.
3. Increase the Contrast level as needed.
4. The quadrant that provides the best contrast varies depending on cell culture vessel type and sample. Try turning on a different quadrant than the one you started with and see if this results in better image quality.
5. Tap **Apply** to accept the settings or **Cancel** to exit the dialog box without saving the changes.

Using the Fluorescent Channels

The ZOE Fluorescent Cell Imager has three fluorescent channels: blue, green, and red. Channels are named according to the color they emit.

A control panel located on the left side of the screen (Figure 3) contains controls for switching on and off light sources for the individual imaging channels. The viewing area shows the sample illuminated with the selected light source; the displayed sample is pseudo-colored in the appropriate emission color (Figure 6). Tap the illumination control (Figure 7) to turn the LED light source on, tap it again to turn it off.

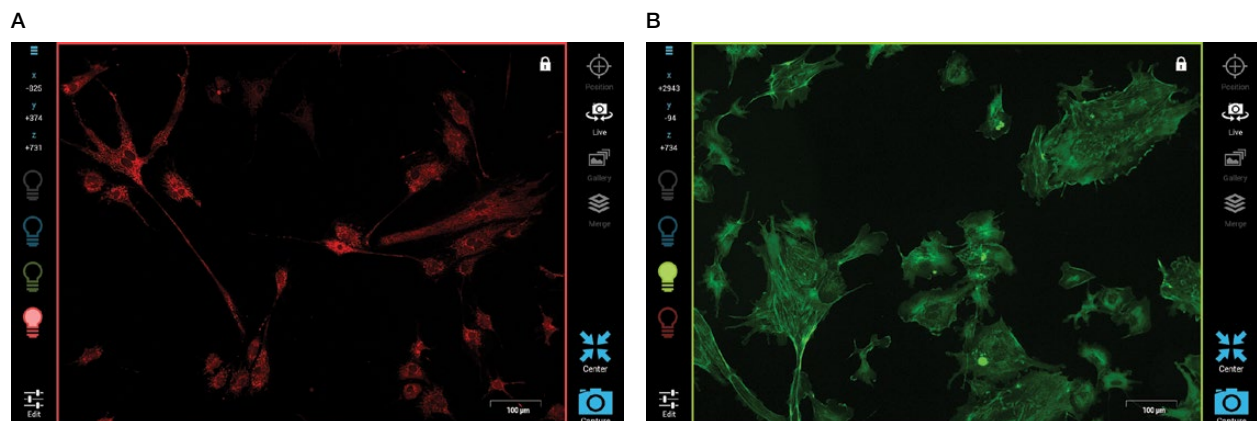


Fig. 6. Samples pseudo-colored in the appropriate emission color in Live mode. A, BPAE cells, mitochondria stained with MitoTracker Red CMXRos; **B,** BPAE cells, F-actin stained with Alexa Fluor 488 Phalloidin.



Fig. 7. Light source on/off controls. A, blue channel light source on/off; B, green channel light source on/off; C, red channel light source on/off.

Focus — position indicator on the left side of the display area shows the z-axis position number and is updated during focusing (Figure 3). Noting the approximate z-axis number for the tissue culture vessels you use can speed up focusing (Table 2).

Optimizing Imaging Parameters for Fluorescence Imaging

Use the Edit menu to adjust these precapture parameters (Figure 8): Gain, LED Intensity, and Contrast values; Exposure time (msec); and quadrant illumination. Drag the slider bar to adjust a parameter. Tap the – and + controls at either end of each slider bar for fine adjustments.

- **When searching for sample** — increase the **Gain** value for brighter signal; reduce the **Exposure** time to obtain a faster frame rate
- **Once the sample is identified and ready to be captured** — lower the **Gain** value to reduce the background noise; increase the **Exposure** time to regain signal intensity as needed
- **To further increase brightness** — start by increasing **LED Intensity** value; follow by increasing **Exposure** time if needed

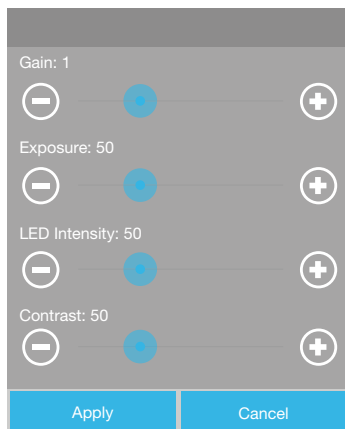


Fig. 8. Edit controls in fluorescent channels.

Image Capture

To capture the image of the sample displayed in the viewing area, tap the **Capture** (Figure 3) icon. The captured image will remain displayed on the screen (action mode will change from **Live** to **Gallery**) and the image file will automatically be saved to the internal memory. Captured images can be edited or used in multicolor image merges. For more details, go to **Capturing Images for Multicolor Merge Mode** (page 17).

Gallery Mode

All captured images can be accessed in the **Gallery** mode. They are stored in image folders by color: Brightfield, Blue, Green, or Red. Multicolor merges, created using the captured images, are stored in the Merge folder.

The internal memory can store approximately:

- JPEG ~2,500 files
- TIFF ~1,500 files
- 8-bit RAW ~400 files
- 12-bit RAW ~800 files

Note: Storing smaller numbers of image files (fewer than 1,000 JPEG files) will ensure rapid functioning of the ZOE Fluorescent Cell Imager and will also lengthen the life span of the internal memory.

Viewing Captured Images

Controls for opening the individual folders are located in the control panel at the left side of the screen (Figure 9). To open, tap a folder (Figure 10) and the most recently viewed image from that folder will open. The viewing area will be black if a gallery folder is empty.

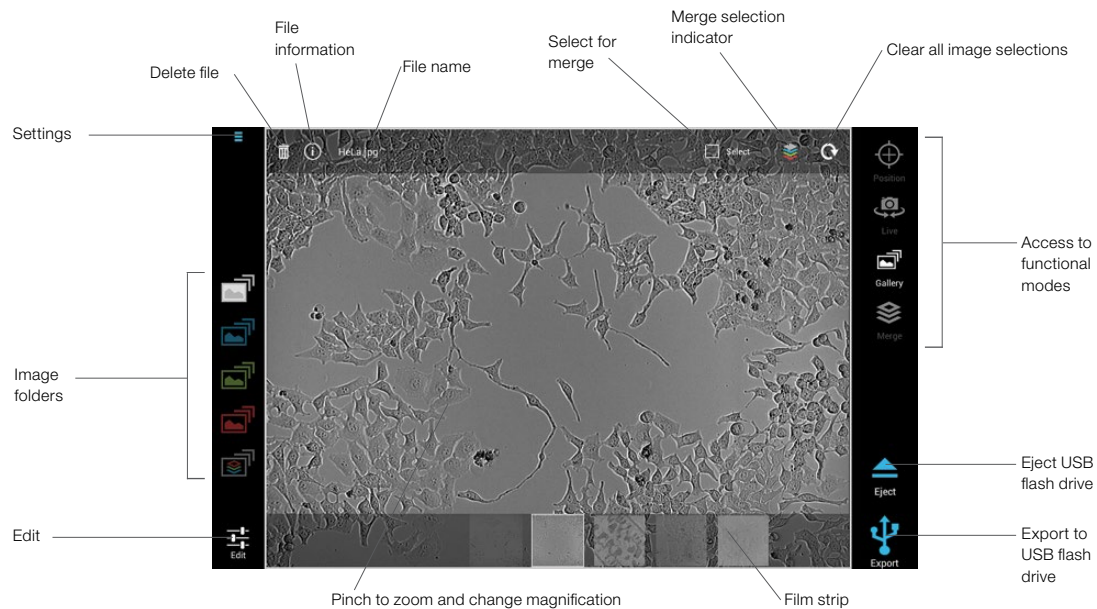


Fig. 9. Gallery mode. Selected folder is illuminated. In this case, the selected folder contains images captured using the brightfield channel.




Fig. 10. Five image folders are accessible in Gallery mode. A, folder with brightfield images; B, folder with images from the blue channel; C, folder with images from the green channel; D, folder with images from red channel; E, folder with multicolor merged images.


Images in every folder are organized according to the time of capture. To move to the next image, swipe the viewing area to the right. Swiping the viewing area to the left opens the previously captured image.

The **film strip** (Figure 9) of all images stored in a particular folder is located at the bottom part of the screen. Tap anywhere in the viewing area to hide it; tap again to bring it back. A thick border surrounds the thumbnail corresponding to the currently opened image. Tapping another window on the film strip will open that image.

Use the pinch-to-zoom gesture to magnify the image to view more details.



Edit — brightness and contrast can be adjusted by dragging the slider bar. For fine adjustments, tap the + and – controls.

Image file Information — tapping the  icon opens a menu with information such as file type and time stamp.

Delete — tapping the  icon brings up an “Are you sure you want to permanently delete <file name>?” message. Select **OK** to delete or **Cancel** to cancel deletion.

Note: If you delete a merged image, the single-color image files used to create the merge will not be deleted.

File name — the file is automatically named at the time of capture based on the selected naming convention. To change a file name, tap the file name twice. A virtual keyboard is displayed. When the new name is typed, tap **Enter** on the virtual keyboard; this hides the keyboard and records the new file name.

Export — the export icon is active (blue) only when a USB flash drive is inserted in the USB port. Tap to export the currently opened image onto the inserted USB flash drive. To export all images in the instrument memory, tap  and select **Export all**. To select and export multiple images tap  and select **Image management**. For more information about Image management, see page 14.

Eject — after inserting a USB flash drive, the Eject icon appears on the screen. When the image export is completed, tap **Eject** to safely remove the USB flash drive.

Image Merge Controls

For more details about creating merged images, go to **Capturing Images for Multicolor Merge Mode** (page 17).

Select for merge — tap the checkbox icon (Figure 11) to select an image for use in creating a multicolor merge. Selected images are automatically uploaded into the Merge mode.

Note: Only one image per color channel can be used. To replace a selected image with a new one, tap the **Select for merge** control in the new image. This automatically overwrites the previous selection in the particular color.

Merge selection indicator — this icon (Figure 12) shows the color of images selected to be used in a merge. Tap the icon to move to the selected image in that particular captured image folder.

Clear — tap to clear all existing merge selections.



Fig. 11. Select for merge checkbox. A, in an unselected image in the gallery, checkbox is dark (off); B, when the image is selected, checkbox turns green, white checkmark appears (on).



Fig. 12. Merge selection indicator showing merged colors. Images in the blue and green galleries are selected.

Delete All Images

To access Delete all images control, tap the **Settings** icon in the upper left corner of the user interface. To delete all images stored in the internal memory, select **Delete all images**.

Image Management

Image management is used to select image files using criteria such as channel options and time periods. After the image files are selected, you can export or delete them (Figure 13).

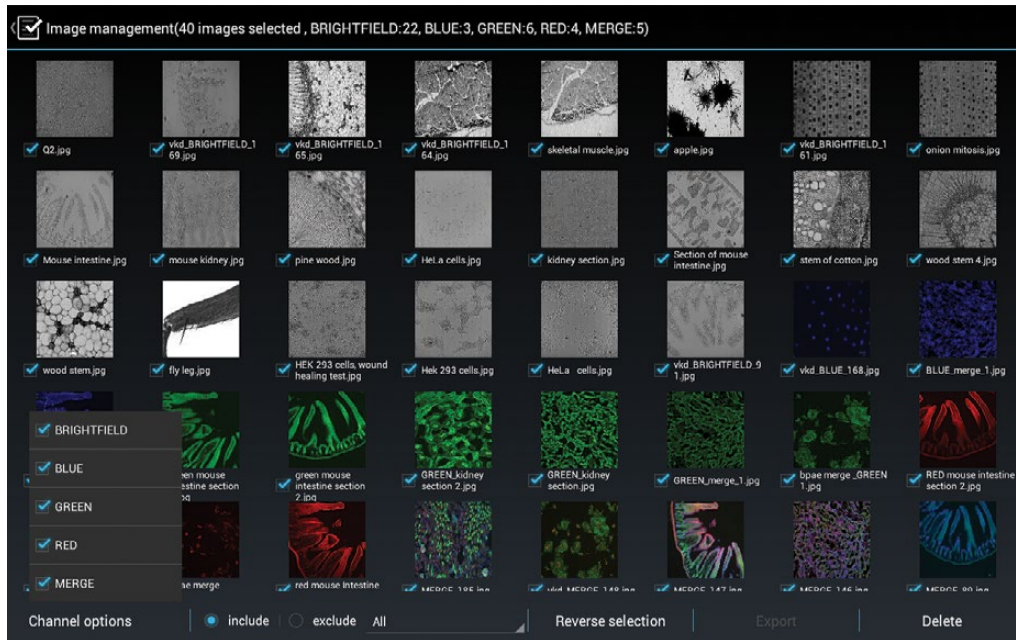


Fig. 13. Image management screen. In this example, channel options have been selected, a time period has been defined, and the Include option chosen. Those parameters determined these 40 images for selection.

Selecting Image Files

To use Image management, tap  and select **Image management**. This enables you to simplify image selection by filtering according to:

- Channel options
- Include/exclude option
- Time period options

Then Image management displays the image files that match your criteria and a checkmark appears in the checkbox associated with the selected image file. You can clear image file checkboxes manually by tapping the checkmarks.

Channel Options

Choose one or more channel options by tapping **Channel options** and then tapping the checkbox next to the channel option:

- Brightfield
- Blue
- Green
- Red
- Merge

Include/Exclude

Use **include** or **exclude** with the time period option. Tap the **include** radio button to select only image files taken during the time period you select. For example, after you select the channel options, tap the **include** radio button and then tap a time period such as **Last 7 days**. Only image files taken in the last 7 days will appear.

Tap the **exclude** radio button to exclude image files that were taken during the time period you select. For example, after you select the channel options, tap the **exclude** radio button and then tap a time period such as **Last 24 hours**. No image files taken in the Last 24 hours are selected.

Note: The radio buttons turn blue when active.

Time Period Options

Choose from one of the time periods:

- Last 24 hours
- Last 7 days
- Last 30 days
- Last 3 months
- All

Reverse Selection

Tapping **Reverse selection** reverses your selection — previously selected image files will be unselected and image files previously excluded based on your criteria will now be selected. Checkmarks will reverse accordingly. For example, if, based on the criteria you selected, you have 200 selected image files and three unselected, when you tap **Reverse selection** you will have three selected image files and 200 unselected image files.

Exporting Image Files

You can export one or more image files directly from the Image management area. To export image files, insert a USB flash drive in one of the two USB ports, located at the front and back of the instrument. Select the image files you wish to export and tap **Export**. A message appears warning you to ensure that the USB flash drive remains attached during export. Tap **Continue**. The export may take a few minutes to complete, depending on how many image files you selected. When the image export has completed, tap  and select **Eject USB flash drive** to safely remove the USB flash drive. Wait until the USB flash drive has been unmounted before removing it.

Deleting Image Files

Important: If you delete image files, they are completely removed from the instrument’s internal memory.

You can delete one or more image files from the internal memory directly from the Image management area. Select the image files you wish to delete and tap **Delete**. A warning message appears asking if you want to permanently delete all selected images. If you are certain of your selection, click **Continue**.

Merge Mode

In this mode previously selected single-color images are overlaid into a multicolor image (Figure 14). For more details about capturing and selecting images for merge, go to **Capturing Images for Multicolor Merge Mode** (page 17).

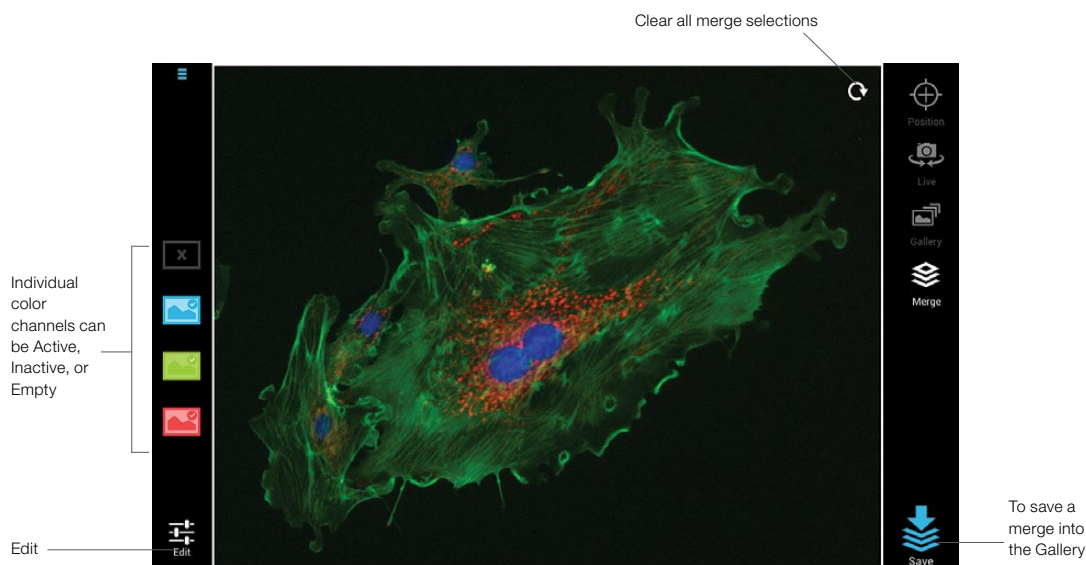


Fig. 14. Merge mode.

Image controls located on the left side of the screen change their appearance depending on whether an image from that color was selected (Figure 15).



Fig. 15. Color channel icons in Merge mode. **A**, active: color channel with selected image, the image is displayed; **B**, inactive: color channel with selected image, the image is hidden; **C**, empty: color channel for which no image was selected.

Tapping an active channel (image is displayed) hides the particular color from display, tapping it again makes it visible again.

Edit — tap the color for which you wish to adjust brightness and contrast. Drag the slider bar or tap the + and – controls for fine adjustments (Figure 16).

Note: Brightfield images cannot be edited in Merge mode. Any edits to a brightfield image must be made in Gallery mode and saved. Edits made and saved in Gallery mode to an image selected in Merge mode will also display in Merge.

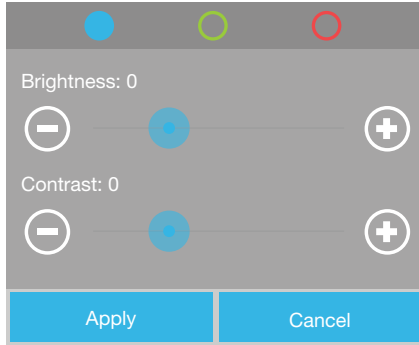


Fig. 16. Edit dialog window in Merge mode.

Save — when satisfied with the multicolor image tap the **Save** icon (Figure 14). The merged image, along with links to the underlying single-color images, is saved to the Merge folder in the Gallery (Figure 9).

Note: When creating a merge, only color channels that are active at the time of saving (Figure 15A) are included. If a color is inactive and thus not displayed (Figure 15B), it will not be included.

Clear — use the clear icon to clear all selections (Figure 14). This control is also available in Gallery mode.

Note: To empty a single channel, go to the individual image folder in the **Gallery** and tap the active **Select** icon (Figure 11). The icon will go to its off state and the particular color channel in Merge mode will be empty (Figure 15C). To replace an image, return to Gallery mode and tap the **Select** icon in the image you wish to use instead.

Note: When the stage is centered, a different field of view is displayed. To prevent users from accidentally merging images with different fields of view, all image selections for merge are cleared when the stage is centered.

Capturing Images for Multicolor Merge Mode

Using the ZOE Fluorescent Cell Imager's onboard software, images from up to four channels can be overlaid into a multicolor image merge. When capturing images that will be overlaid into a merge, all images should come from the same area of the sample and must be of the same magnification. To prevent inadvertently swiping the screen and moving the stage or changing the magnification, use the Stage/Zoom lock. After you have selected the sample area and level of zoom in the channel you wish to use, tap the **Stage/Zoom** lock. When done capturing images for the merge, tap the lock icon again to enable stage movement and magnification changes.

Note: Images of different magnification cannot be overlaid; an error message will be displayed.

To capture images for a multicolor merge:

1. Go to Live mode.
2. Turn on the light source you wish to use.
3. Adjust settings in Edit if desired and tap **Capture**.
4. The active mode switches to the Gallery mode and the just-captured image is displayed. If satisfied with the image, tap **Select for merge** (Figure 17A) in the upper right corner of the screen. The selected image is uploaded into the Merge mode. The merge selection indicator is automatically updated to show all colors that are currently selected (Figure 17B).

5. Return to the Live mode and repeat steps 3 and 4 for the remaining channels that you wish to use in the merge.
6. Go to the Merge mode where all selected images are automatically overlaid (see **Merge Mode** in section 3 for more details).
7. Optimize brightness and contrast in Edit if desired. Tap **Save** to save the merge as a single-image file that can be accessed in the Merge folder in Gallery mode. From there it can be exported to a USB flash drive along with the underlying single-color image files.

Note: Only one image per color channel can be used. To replace a selected image with a new one, tap the **Select for merge** control in the new image. This automatically overwrites the previous selection in that color. To clear all previous merge selections tap the **Clear** control.

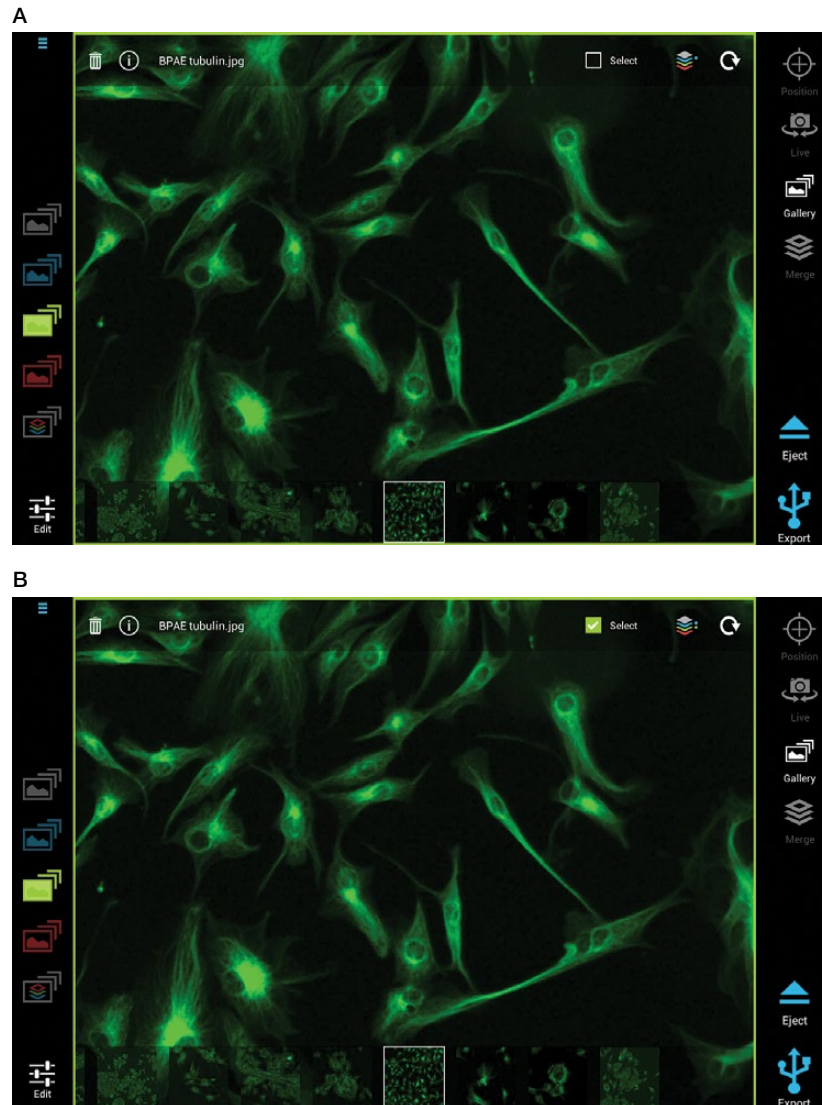


Fig. 17. Selecting an image for merge. **A**, the displayed file, BPAE tubulin.jpg, file has not been selected for merge. The merge selection indicator (upper right side of screen) shows that an image from the blue folder has been selected for a merge. **B**, the displayed image (BPAE tubulin.jpg) file has now been selected for merge. The merge selection indicator shows that images from both the blue and the green folders have been selected and are uploaded into the merge mode.

Section 4

Maintenance and Troubleshooting

The ZOE Fluorescent Cell Imager requires little maintenance for proper operation. However, with long and constant use, the cell imager will need to be cleaned and some other maintenance performed.

Cleaning the ZOE Fluorescent Cell Imager

The instrument should be cleaned on a regular schedule to remove any debris or dirt that might interfere with proper function.

Cleaning the Instrument Body

Always turn off the instrument and disconnect the power cable before cleaning the case. Use a soft, lint-free cloth and deionized water to wipe down the outer case. Avoid wetting the power switch or the power jack while cleaning the case. To **decontaminate the instrument body**, wipe it with a soft, lint-free cloth and 70% alcohol to clean the outer case. These cleaning instructions apply only to the outer case and not to the LCD screen.

Warning! Never pour or spray water or other solutions directly on the instrument. Wet components can cause electrical shock when the instrument is plugged in.

If you use a 10% bleach solution to clean or decontaminate the instrument, it may leave a residue of bleach crystals that over time could scratch the surface. If bleach comes in contact with the LCD screen, wipe down the screen with a damp cloth to remove any traces of bleach.

Do not spill liquids inside the cell imager. Do not overfill cell culture vessels or tip such a vessel when placing it on the sample stage. This could render the cell imager not functional.

Cleaning the LCD Screen

Always turn off the instrument and disconnect the power cable before cleaning the LCD screen. Use a soft, lint-free cloth lightly moistened with 70% isopropyl alcohol. Cleaning the screen with excessive force can damage it. Wipe the screen dry immediately.

Warning! Do not use abrasive detergents or rough material because they may scratch the control panel and display. Do not use bleach or water for cleaning the LCD screen as both leave residues that make the screen appear hazy. If water must be used, it should be distilled water.

Cleaning the Objective Lens

1. Raise the objective lens to its highest focus position.
2. Unplug the instrument.
3. Put a drop of recommended lens cleaner on lens tissues or cotton swab and gently wipe the objective lens clean and dry.

Recommended Lens Cleaning Fluid

- Cleaning Spray, Zeiss
- Sparkle Microscope Optical Lens Cleaner, AmScope

Recommended Lens Tissue

- Commercial Grade Lens Tissue, Edmund Optics Inc., #52-105
- Cotton-Tipped Swabs, Edmund Optics Inc., #56-926

Warning! Do not put fingers into the stage hole or attempt to clean the objective lens while moving the motorized stage.

Battery

The ZOE Fluorescent Cell Imager uses a 3 V lithium coin cell battery with a 10-year expected lifetime to maintain the clock setting. If the date on the instrument changes without user input, it may be an indication that the battery is getting weak. Should this occur, contact Bio-Rad Technical Support for assistance with battery replacement.

Warning! Do not attempt to change the battery. Contact the Bio-Rad Technical Support team.

For the State of California (U.S.) only.

Perchlorate material — special handling may apply. See dtsc.ca.gov/hazardouswaste/perchlorate for more information.

Perchlorate material: lithium battery contains perchlorate.

Section 5

Software Notices and Terms

The software provided as part of the ZOE Fluorescent Cell Imager includes free, open source, and public-source software. Certain OPEN LICENSES require that the source materials be made available to recipients or other requestors under the terms of the same OPEN LICENSE. Recipients or requestors who would like to receive a copy of such corresponding source software should submit a request to Bio-Rad by post at:

Bio-Rad Laboratories, Inc.
Attn: Open Source Requests
2000 Alfred Nobel Drive
Hercules, CA 94547

Please provide the following information when submitting OSS requests:

- The Bio-Rad product (and any available version information) with which the requested OSS packages are distributed;
- An email address at which Bio-Rad may contact you regarding the request (if available); and
- The postal address for delivery of the requested source code.

This offer is valid for a period of three (3) years from the date of the distribution of this device by Bio-Rad.

The corresponding open source software can also be downloaded at:

<https://info.bio-rad.com/open-source-zoe.html>

Open source software is subject to terms and conditions as set forth in their license. This section provides the notices required by the open source license.

Android 4.0.4

Open Source Licensing

Apache License, Version 2.0, January 2004 www.apache.org/licenses/

TERMS AND CONDITIONS FOR USE, REPRODUCTION, AND DISTRIBUTION

1. Definitions.

“License” shall mean the terms and conditions for use, reproduction, and distribution as defined by Sections 1 through 9 of this document.

“Licensor” shall mean the copyright owner or entity authorized by the copyright owner that is granting the License.

“Legal Entity” shall mean the union of the acting entity and all other entities that control, are controlled by, or are under common control with that entity. For the purposes of this definition, “control” means (i) the power, direct or indirect, to cause the direction or management of such entity, whether by contract or otherwise, or (ii) ownership of fifty percent (50%) or more of the outstanding shares, or (iii) beneficial ownership of such entity.

“You” (or “Your”) shall mean an individual or Legal Entity exercising permissions granted by this License.

“Source” form shall mean the preferred form for making modifications, including but not limited to software source code, documentation source, and configuration files.

“Object” form shall mean any form resulting from mechanical transformation or translation of a Source form, including but not limited to compiled object code, generated documentation, and conversions to other media types.

“Work” shall mean the work of authorship, whether in Source or Object form, made available under the License, as indicated by a copyright notice that is included in or attached to the work (an example is provided in the Appendix below).

“Derivative Works” shall mean any work, whether in Source or Object form, that is based on (or derived from) the Work and for which the editorial revisions, annotations, elaborations, or other modifications represent, as a whole, an original work of authorship. For the purposes of this License, Derivative Works shall not include works that remain separable from, or merely link (or bind by name) to the interfaces of, the Work and Derivative Works thereof.

“Contribution” shall mean any work of authorship, including the original version of the Work and any modifications or additions to that Work or Derivative Works thereof, that is intentionally submitted to Licensor for inclusion in the Work by the copyright owner or by an individual or Legal Entity authorized to submit on behalf of the copyright owner. For the purposes of this definition, “submitted” means any form of electronic, verbal, or written communication sent to the Licensor or its representatives, including but not limited to communication on electronic mailing lists, source code control systems, and issue tracking systems that are managed by, or on behalf of, the Licensor for the purpose of discussing and improving the Work, but excluding communication that is conspicuously marked or otherwise designated in writing by the copyright owner as “Not a Contribution.”

“Contributor” shall mean Licensor and any individual or Legal Entity on behalf of whom a Contribution has been received by Licensor and subsequently incorporated within the Work.

2. Grant of Copyright License. Subject to the terms and conditions of this License, each Contributor hereby grants to You a perpetual, worldwide, non-exclusive, no-charge, royalty-free, irrevocable copyright license to reproduce, prepare Derivative Works of, publicly display, publicly perform, sublicense, and distribute the Work and such Derivative Works in Source or Object form.
3. Grant of Patent License. Subject to the terms and conditions of this License, each Contributor hereby grants to You a perpetual, worldwide, non-exclusive, no-charge, royalty-free, irrevocable (except as stated in this section) patent license to make, have made, use, offer to sell, sell, import, and otherwise transfer the Work, where such license applies only to those patent claims licensable by such Contributor that are necessarily infringed by their Contribution(s) alone or by combination of their Contribution(s) with the Work to which such Contribution(s) was submitted. If You institute patent litigation against any entity (including a cross-claim or counterclaim in a lawsuit) alleging that the Work or a Contribution incorporated within the Work constitutes direct or contributory patent infringement, then any patent licenses granted to You under this License for that Work shall terminate as of the date such litigation is filed.
4. Redistribution. You may reproduce and distribute copies of the Work or Derivative Works thereof in any medium, with or without modifications, and in Source or Object form, provided that You meet the following conditions:
 - a. You must give any other recipients of the Work or Derivative Works a copy of this License; and
 - b. You must cause any modified files to carry prominent notices stating that You changed the files; and
 - c. You must retain, in the Source form of any Derivative Works that You distribute, all copyright, patent, trademark, and attribution notices from the Source form of the Work, excluding those notices that do not pertain to any part of the Derivative Works; and
 - d. If the Work includes a “NOTICE” text file as part of its distribution, then any Derivative Works that You distribute must include a readable copy of the attribution notices contained within such NOTICE file, excluding those notices that do not pertain to any part of the Derivative Works, in at least one of the following places: within a NOTICE text file distributed as part of the Derivative Works; within the Source form or documentation, if provided along with the Derivative Works; or, within a display generated by the Derivative Works, if and wherever such third-party notices normally appear. The contents of the NOTICE file are for informational purposes only and do not modify the License. You may add Your own attribution notices within Derivative Works that You distribute, alongside or as an addendum to the NOTICE text from the Work, provided that such additional attribution notices cannot be construed as modifying the License.

You may add Your own copyright statement to Your modifications and may provide additional or different license terms and conditions for use, reproduction, or distribution of Your modifications, or for any such Derivative Works as a whole, provided Your use, reproduction, and distribution of the Work otherwise complies with the conditions stated in this License.

5. Submission of Contributions. Unless You explicitly state otherwise, any Contribution intentionally submitted for inclusion in the Work by You to the Licensor shall be under the terms and conditions of this License, without any additional terms or conditions. Notwithstanding the above, nothing herein shall supersede or modify the terms of any separate license agreement you may have executed with Licensor regarding such Contributions.

6. Trademarks. This License does not grant permission to use the trade names, trademarks, service marks, or product names of the Licensor, except as required for reasonable and customary use in describing the origin of the Work and reproducing the content of the NOTICE file.
7. Disclaimer of Warranty. Unless required by applicable law or agreed to in writing, Licensor provides the Work (and each Contributor provides its Contributions) on an "AS IS" BASIS, WITHOUT WARRANTIES OR CONDITIONS OF ANY KIND, either express or implied, including, without limitation, any warranties or conditions of TITLE, NON-INFRINGEMENT, MERCHANTABILITY, or FITNESS FOR A PARTICULAR PURPOSE. You are solely responsible for determining the appropriateness of using or redistributing the Work and assume any risks associated with Your exercise of permissions under this License.
8. Limitation of Liability. In no event and under no legal theory, whether in tort (including negligence), contract, or otherwise, unless required by applicable law (such as deliberate and grossly negligent acts) or agreed to in writing, shall any Contributor be liable to You for damages, including any direct, indirect, special, incidental, or consequential damages of any character arising as a result of this License or out of the use or inability to use the Work (including but not limited to damages for loss of goodwill, work stoppage, computer failure or malfunction, or any and all other commercial damages or losses), even if such Contributor has been advised of the possibility of such damages.
9. Accepting Warranty or Additional Liability. While redistributing the Work or Derivative Works thereof, You may choose to offer, and charge a fee for, acceptance of support, warranty, indemnity, or other liability obligations and/or rights consistent with this License. However, in accepting such obligations, You may act only on Your own behalf and on Your sole responsibility, not on behalf of any other Contributor, and only if You agree to indemnify, defend, and hold each Contributor harmless for any liability incurred by, or claims asserted against, such Contributor by reason of your accepting any such warranty or additional liability.

Linux Kernel 3.0.35

Note: This copyright does **not** cover user programs that use kernel services by normal system calls — this is merely considered normal use of the kernel, and does **not** fall under the heading of "derived work". Also note that the GPL below is copyrighted by the Free Software Foundation, but the instance of code that it refers to (the Linux kernel) is copyrighted by me and others who actually wrote it.

Also note that the only valid version of the GPL as far as the kernel is concerned is `_this_` particular version of the license (ie v2, not v2.2 or v3.x or whatever), unless explicitly otherwise stated.

Linus Torvalds

GNU GENERAL PUBLIC LICENSE

Version 2, June 1991

Copyright (C) 1989, 1991 Free Software Foundation, Inc.

51 Franklin St, Fifth Floor, Boston, MA 02110-1301 USA

Everyone is permitted to copy and distribute verbatim copies of this license document, but changing it is not allowed.

Preamble

The licenses for most software are designed to take away your freedom to share and change it. By contrast, the GNU General Public License is intended to guarantee your freedom to share and change free software — to make sure the software is free for all its users. This General Public License applies to most of the Free Software Foundation's software and to any other program whose authors commit to using it. (Some other Free Software Foundation software is covered by the GNU Library General Public License instead.) You can apply it to your programs, too.

When we speak of free software, we are referring to freedom, not price. Our General Public Licenses are designed to make sure that you have the freedom to distribute copies of free software (and charge for this service if you wish), that you receive source code or can get it if you want it, that you can change the software or use pieces of it in new free programs; and that you know you can do these things.

To protect your rights, we need to make restrictions that forbid anyone to deny you these rights or to ask you to surrender the rights. These restrictions translate to certain responsibilities for you if you distribute copies of the software, or if you modify it.

For example, if you distribute copies of such a program, whether gratis or for a fee, you must give the recipients all the rights that you have. You must make sure that they, too, receive or can get the source code. And you must show them these terms so they know their rights.

We protect your rights with two steps: (1) copyright the software, and (2) offer you this license which gives you legal permission to copy, distribute and/or modify the software.

Also, for each author's protection and ours, we want to make certain that everyone understands that there is no warranty for this free software. If the software is modified by someone else and passed on, we want its recipients to know that what they have is not the original, so that any problems introduced by others will not reflect on the original authors' reputations.

Finally, any free program is threatened constantly by software patents. We wish to avoid the danger that redistributors of a free program will individually obtain patent licenses, in effect making the program proprietary. To prevent this, we have made it clear that any patent must be licensed for everyone's free use or not licensed at all.

The precise terms and conditions for copying, distribution and modification follow.

GNU GENERAL PUBLIC LICENSE

TERMS AND CONDITIONS FOR COPYING, DISTRIBUTION AND MODIFICATION

0. This License applies to any program or other work which contains a notice placed by the copyright holder saying it may be distributed under the terms of this General Public License. The "Program", below, refers to any such program or work, and a "work based on the Program" means either the Program or any derivative work under copyright law: that is to say, a work containing the Program or a portion of it, either verbatim or with modifications and/or translated into another language. (Hereinafter, translation is included without limitation in the term "modification".) Each licensee is addressed as "you".

Activities other than copying, distribution and modification are not covered by this License; they are outside its scope. The act of running the Program is not restricted, and the output from the Program is covered only if its contents constitute a work based on the Program (independent of having been made by running the Program). Whether that is true depends on what the Program does.

1. You may copy and distribute verbatim copies of the Program's source code as you receive it, in any medium, provided that you conspicuously and appropriately publish on each copy an appropriate copyright notice and disclaimer of warranty; keep intact all the notices that refer to this License and to the absence of any warranty; and give any other recipients of the Program a copy of this License along with the Program.

You may charge a fee for the physical act of transferring a copy, and you may at your option offer warranty protection in exchange for a fee.

2. You may modify your copy or copies of the Program or any portion of it, thus forming a work based on the Program, and copy and distribute such modifications or work under the terms of Section 1 above, provided that you also meet all of these conditions:
 - a. You must cause the modified files to carry prominent notices stating that you changed the files and the date of any change.
 - b. You must cause any work that you distribute or publish, that in whole or in part contains or is derived from the Program or any part thereof, to be licensed as a whole at no charge to all third parties under the terms of this License.
 - c. If the modified program normally reads commands interactively when run, you must cause it, when started running for such interactive use in the most ordinary way, to print or display an announcement including an appropriate copyright notice and a notice that there is no warranty (or else, saying that you provide a warranty) and that users may redistribute the program under these conditions, and telling the user how to view a copy of this License. (Exception: if the Program itself is interactive but does not normally print such an announcement, your work based on the Program is not required to print an announcement.)

These requirements apply to the modified work as a whole. If identifiable sections of that work are not derived from the Program, and can be reasonably considered independent and separate works in themselves, then this License, and its terms, do not apply to those sections when you distribute them as separate works. But when you distribute the same sections as part of a whole which is a work based on the Program, the distribution of the whole must be on the terms of this License, whose permissions for other licensees extend to the entire whole, and thus to each and every part regardless of who wrote it.

Thus, it is not the intent of this section to claim rights or contest your rights to work written entirely by you; rather, the intent is to exercise the right to control the distribution of derivative or collective works based on the Program.

In addition, mere aggregation of another work not based on the Program with the Program (or with a work based on the Program) on a volume of a storage or distribution medium does not bring the other work under the scope of this License.

3. You may copy and distribute the Program (or a work based on it, under Section 2) in object code or executable form under the terms of Sections 1 and 2 above provided that you also do one of the following:
 - a. Accompany it with the complete corresponding machine-readable source code, which must be distributed under the terms of Sections 1 and 2 above on a medium customarily used for software interchange; or,

- b. Accompany it with a written offer, valid for at least three years, to give any third party, for a charge no more than your cost of physically performing source distribution, a complete machine-readable copy of the corresponding source code, to be distributed under the terms of Sections 1 and 2 above on a medium customarily used for software interchange; or,
- c. Accompany it with the information you received as to the offer to distribute corresponding source code. (This alternative is allowed only for noncommercial distribution and only if you received the program in object code or executable form with such an offer, in accord with Subsection b above.)

The source code for a work means the preferred form of the work for making modifications to it. For an executable work, complete source code means all the source code for all modules it contains, plus any associated interface definition files, plus the scripts used to control compilation and installation of the executable.

However, as a special exception, the source code distributed need not include anything that is normally distributed (in either source or binary form) with the major components (compiler, kernel, and so on) of the operating system on which the executable runs, unless that component itself accompanies the executable.

If distribution of executable or object code is made by offering access to copy from a designated place, then offering equivalent access to copy the source code from the same place counts as distribution of the source code, even though third parties are not compelled to copy the source along with the object code.

- 4. You may not copy, modify, sublicense, or distribute the Program except as expressly provided under this License. Any attempt otherwise to copy, modify, sublicense or distribute the Program is void, and will automatically terminate your rights under this License. However, parties who have received copies, or rights, from you under this License will not have their licenses terminated so long as such parties remain in full compliance.
- 5. You are not required to accept this License, since you have not signed it. However, nothing else grants you permission to modify or distribute the Program or its derivative works. These actions are prohibited by law if you do not accept this License. Therefore, by modifying or distributing the Program (or any work based on the Program), you indicate your acceptance of this License to do so, and all its terms and conditions for copying, distributing or modifying the Program or works based on it.
- 6. Each time you redistribute the Program (or any work based on the Program), the recipient automatically receives a license from the original licensor to copy, distribute or modify the Program subject to these terms and conditions. You may not impose any further restrictions on the recipients' exercise of the rights granted herein. You are not responsible for enforcing compliance by third parties to this License.
- 7. If, as a consequence of a court judgment or allegation of patent infringement or for any other reason (not limited to patent issues), conditions are imposed on you (whether by court order, agreement or otherwise) that contradict the conditions of this License, they do not excuse you from the conditions of this License. If you cannot distribute so as to satisfy simultaneously your obligations under this License and any other pertinent obligations, then as a consequence you may not distribute the Program at all. For example, if a patent license would not permit royalty-free redistribution of the Program by all those who receive copies directly or indirectly through you, then the only way you could satisfy both it and this License would be to refrain entirely from distribution of the Program.

If any portion of this section is held invalid or unenforceable under any particular circumstance, the balance of the section is intended to apply and the section as a whole is intended to apply in other circumstances.

It is not the purpose of this section to induce you to infringe any patents or other property right claims or to contest validity of any such claims; this section has the sole purpose of protecting the integrity of the free software distribution system, which is implemented by public license practices. Many people have made generous contributions to the wide range of software distributed through that system in reliance on consistent application of that system; it is up to the author/donor to decide if he or she is willing to distribute software through any other system and a licensee cannot impose that choice.

This section is intended to make thoroughly clear what is believed to be a consequence of the rest of this License.

8. If the distribution and/or use of the Program is restricted in certain countries either by patents or by copyrighted interfaces, the original copyright holder who places the Program under this License may add an explicit geographical distribution limitation excluding those countries, so that distribution is permitted only in or among countries not thus excluded. In such case, this License incorporates the limitation as if written in the body of this License.
9. The Free Software Foundation may publish revised and/or new versions of the General Public License from time to time. Such new versions will be similar in spirit to the present version, but may differ in detail to address new problems or concerns.

Each version is given a distinguishing version number. If the Program specifies a version number of this License which applies to it and "any later version", you have the option of following the terms and conditions either of that version or of any later version published by the Free Software Foundation. If the Program does not specify a version number of this License, you may choose any version ever published by the Free Software Foundation.

10. If you wish to incorporate parts of the Program into other free programs whose distribution conditions are different, write to the author to ask for permission. For software which is copyrighted by the Free Software Foundation, write to the Free Software Foundation; we sometimes make exceptions for this. Our decision will be guided by the two goals of preserving the free status of all derivatives of our free software and of promoting the sharing and reuse of software generally.

NO WARRANTY

11. BECAUSE THE PROGRAM IS LICENSED FREE OF CHARGE, THERE IS NO WARRANTY FOR THE PROGRAM, TO THE EXTENT PERMITTED BY APPLICABLE LAW. EXCEPT WHEN OTHERWISE STATED IN WRITING THE COPYRIGHT HOLDERS AND/OR OTHER PARTIES PROVIDE THE PROGRAM "AS IS" WITHOUT WARRANTY OF ANY KIND, EITHER EXPRESSED OR IMPLIED, INCLUDING, BUT NOT LIMITED TO, THE IMPLIED WARRANTIES OF MERCHANTABILITY AND FITNESS FOR A PARTICULAR PURPOSE. THE ENTIRE RISK AS TO THE QUALITY AND PERFORMANCE OF THE PROGRAM IS WITH YOU. SHOULD THE PROGRAM PROVE DEFECTIVE, YOU ASSUME THE COST OF ALL NECESSARY SERVICING, REPAIR OR CORRECTION.

12. IN NO EVENT UNLESS REQUIRED BY APPLICABLE LAW OR AGREED TO IN WRITING WILL ANY COPYRIGHT HOLDER, OR ANY OTHER PARTY WHO MAY MODIFY AND/OR REDISTRIBUTE THE PROGRAM AS PERMITTED ABOVE, BE LIABLE TO YOU FOR DAMAGES, INCLUDING ANY GENERAL, SPECIAL, INCIDENTAL OR CONSEQUENTIAL DAMAGES ARISING OUT OF THE USE OR INABILITY TO USE THE PROGRAM (INCLUDING BUT NOT LIMITED TO LOSS OF DATA OR DATA BEING RENDERED INACCURATE OR LOSSES SUSTAINED BY YOU OR THIRD PARTIES OR A FAILURE OF THE PROGRAM TO OPERATE WITH ANY OTHER PROGRAMS), EVEN IF SUCH HOLDER OR OTHER PARTY HAS BEEN ADVISED OF THE POSSIBILITY OF SUCH DAMAGES.

END OF TERMS AND CONDITIONS

How to Apply These Terms to Your New Programs

If you develop a new program, and you want it to be of the greatest possible use to the public, the best way to achieve this is to make it free software which everyone can redistribute and change under these terms.

To do so, attach the following notices to the program. It is safest to attach them to the start of each source file to most effectively convey the exclusion of warranty; and each file should have at least the "copyright" line and a pointer to where the full notice is found.

<one line to give the program's name and a brief idea of what it does.>Copyright (C) <year> <name of author>

This program is free software; you can redistribute it and/or modify it under the terms of the GNU General Public License as published by the Free Software Foundation; either version 2 of the License, or (at your option) any later version.

This program is distributed in the hope that it will be useful, but WITHOUT ANY WARRANTY; without even the implied warranty of MERCHANTABILITY or FITNESS FOR A PARTICULAR PURPOSE. See the GNU General Public License for more details.

You should have received a copy of the GNU General Public License along with this program; if not, write to the Free Software Foundation, Inc., 51 Franklin St, Fifth Floor, Boston, MA 02110-1301 USA

Also add information on how to contact you by electronic and paper mail.

If the program is interactive, make it output a short notice like this when it starts in an interactive mode:

Gnomovision version 69, Copyright (C) year name of author Gnomovision comes with ABSOLUTELY NO WARRANTY; for details type `show w'.

This is free software, and you are welcome to redistribute it under certain conditions; type `show c' for details.

The hypothetical commands `show w' and `show c' should show the appropriate parts of the General Public License. Of course, the commands you use may be called something other than `show w' and `show c'; they could even be mouse-clicks or menu items — whatever suits your program.

You should also get your employer (if you work as a programmer) or your school, if any, to sign a "copyright disclaimer" for the program, if necessary. Here is a sample; alter the names:

Yoyodyne, Inc., hereby disclaims all copyright interest in the program

`Gnomovision' (which makes passes at compilers) written by James Hacker.

<signature of Ty Coon>, 1 April 1989

Ty Coon, President of Vice

This General Public License does not permit incorporating your program into proprietary programs. If your program is a subroutine library, you may consider it more useful to permit linking proprietary applications with the library. If this is what you want to do, use the GNU Library General Public License instead of this License.

The complete list of open source software licenses are part of the ZOE Fluorescent Cell Imager software update package and can be downloaded at: **bio-rad.com/ZOE**

Section 6

Ordering Information

Catalog #	Description
1450031	ZOE Fluorescent Cell Imager , 120–240 V, includes instrument, power supply, USB flash drive, instruction manual, quick guide

Visit bio-rad.com/ZOE for more information.

BIO-RAD is a trademark of Bio-Rad Laboratories, Inc.
All trademarks used herein are the property of their respective owner.



**Bio-Rad
Laboratories, Inc.**

Life Science
Group

Website bio-rad.com **USA** 1 800 424 6723 **Australia** 61 2 9914 2800 **Austria** 00 800 00 24 67 23 **Belgium** 00 800 00 24 67 23
Brazil 4003 0399 **Canada** 1 905 364 3435 **China** 86 21 6169 8500 **Czech Republic** 00 800 00 24 67 23 **Denmark** 00 800 00 24 67 23
Finland 00 800 00 24 67 23 **France** 00 800 00 24 67 23 **Germany** 00 800 00 24 67 23 **Hong Kong** 852 2789 3300
Hungary 00 800 00 24 67 23 **India** 91 124 4029300 **Israel** 0 3 9636050 **Italy** 00 800 00 24 67 23 **Japan** 81 3 6361 7000
Korea 82 2 3473 4460 **Luxembourg** 00 800 00 24 67 23 **Mexico** 52 555 488 7670 **The Netherlands** 00 800 00 24 67 23
New Zealand 64 9 415 2280 **Norway** 00 800 00 24 67 23 **Poland** 00 800 00 24 67 23 **Portugal** 00 800 00 24 67 23
Russian Federation 00 800 00 24 67 23 **Singapore** 65 6415 3188 **South Africa** 00 800 00 24 67 23 **Spain** 00 800 00 24 67 23
Sweden 00 800 00 24 67 23 **Switzerland** 00 800 00 24 67 23 **Taiwan** 886 2 2578 7189 **Thailand** 66 2 651 8311
United Arab Emirates 36 1 459 6150 **United Kingdom** 00 800 00 24 67 23

