



Foresight Pro Column Unpacking Guide for 24 and 33 cm ID Columns

Unpacking Guide

This unpacking guide is for Foresight Pro Columns with inner diameters of 24 and 33 cm and bed heights of either 10 or 20 cm.

Attention: These are GMP ready prepacked columns. Follow your SOP guidelines for handling GMP ready-to-use products.



These products are heavy and require two people for unpacking. Follow your SOP guidelines for heavy equipment handling.

Always secure the column in a vertical position to avoid any damage either in a stationary location or when transporting the column.

Safety Guidelines

The following symbols highlight recommendations and warnings regarding the handling of these columns.

Special Attention Symbol

Special attention indicates a special procedure, an exception to normal operation, or something else of specific interest to the reader.



Warning Symbol

Warning indicates possibility of severe personal injury or equipment damage if the instructions are not followed.



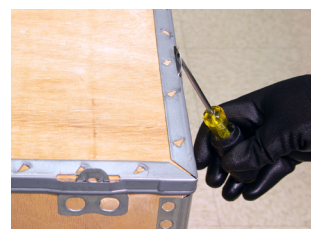
This document is to serve as a guide for unpacking a Foresight Pro Column before use. To use the column, see the Foresight Pro Column Quick Guide (10000149249) located inside the shipping box, or refer to the product user guide (bulletin 3273) available online at bio-rad.com/ForesightProGuide.

- 1 Remove the pallet plastic wrap and straps carefully, using a cutting tool.



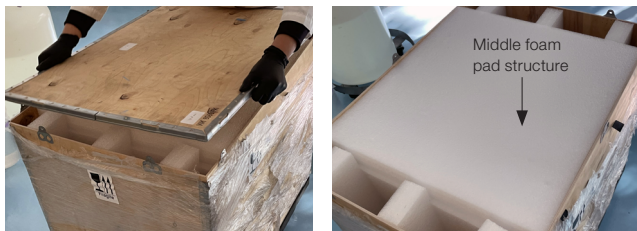
Warning: Use care when cutting.

- 2 Insert a small flathead screwdriver into the central hole of the individual locking pins around the top lid of the plywood box. All ten locking pins must be unlocked before removing the lid.



Warning: Use tools with care to avoid injury.

- 3 Lift and remove the plywood box lid. Then remove the top middle foam pad.



Warning: Use care when handling.

- 4 Locate the resin reference sample and documents.



- 5 Locate the tubing and carefully remove the remaining foam pads. Avoid damaging the inlet and outlet tubing when removing the foam.



Warning: Use care when handling.



Attention: Follow your SOP for lifting heavy items. The column will require two people to lift it out of the box.

- 6 Carefully lift the column straight up to avoid damaging the column and column edges with the plywood box. Firmly grip the edge of the top column plate and lift the bagged column out of the box. Secure the column in a vertical position on a suitable surface to avoid any damage either in a stationary location or when transporting the column. Avoid damaging the inlet and outlet tubing when transferring out of the plywood box.



Warning: Use care to avoid injury when handling.



Attention: The column is GMP ready. Follow your SOP for handling GMP ready products and lifting heavy equipment.

- 7 The column is double bagged and both bags are secured with zip ties. To remove the outer bag, pull the top of the bag up and away from the top of the column (to avoid cutting any column parts or tubing) and carefully cut the zip tie. Then slowly unwrap the outer bag until it is below the bottom column plate.



Warning: Use care when cutting.



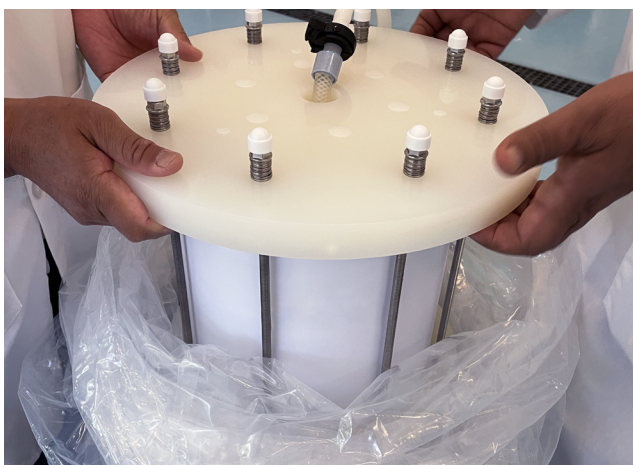
Attention: Follow your SOP for handling GMP ready products.

- 8 To remove the inner bag, pull the top of the bag away from the top of the column (to avoid cutting any column parts or tubing) and carefully cut the zip tie. Then slowly unwrap the inner bag until it is below the bottom column plate.



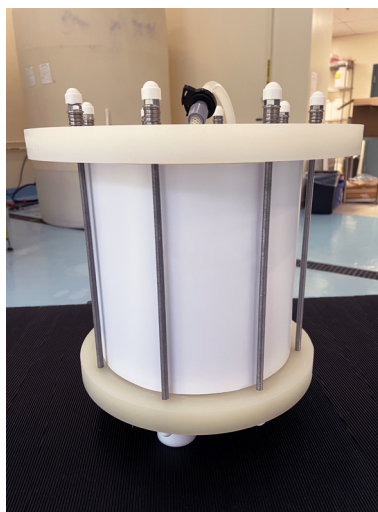
Warning: Use care to avoid injury and column damage.

- 9 Safely lift the column off the bags. Be careful to not cause damage to the inlet and outlet tubing connections. Place the column in the vertical position with the legs on a suitable surface.



Warning: Use care when removing the bags.

- 10 Secure the column on a benchtop or cart.



Warning: Use care when placing column in a secure area to avoid injury and damage.

Column Storage

Follow instructions for column storage in the Foresight Pro User Guide under Column Sanitization and Storage. Visit [bio-rad.com/ForesightProGuide](https://www.bio-rad.com/ForesightProGuide) to download the guide.

Column Setup after Unpacking

Follow instructions in the Foresight Pro Column Quick Guide (10000149249) to connect to your system. This guide is located inside the shipping box.

Visit [bio-rad.com/ForesightProColumn](https://www.bio-rad.com/ForesightProColumn) for more information.

BIO-RAD is a trademark of Bio-Rad Laboratories, Inc. All trademarks used herein are the property of their respective owner. © 2022 Bio-Rad Laboratories, Inc.



**Bio-Rad
Laboratories, Inc.**

Life Science
Group

Website bio-rad.com **USA** 1 800 424 6723 **Australia** 61 2 9914 2800 **Austria** 00 800 00 24 67 23 **Belgium** 00 800 00 24 67 23 **Brazil** 4003 0399
Canada 1 905 364 3435 **China** 86 21 6169 8500 **Czech Republic** 00 800 00 24 67 23 **Denmark** 00 800 00 24 67 23 **Finland** 00 800 00 24 67 23
France 00 800 00 24 67 23 **Germany** 00 800 00 24 67 23 **Hong Kong** 852 2789 3300 **Hungary** 00 800 00 24 67 23 **India** 91 124 4029300 **Israel** 0 3 9636050
Italy 00 800 00 24 67 23 **Japan** 81 3 6361 7000 **Korea** 82 2 3473 4460 **Luxembourg** 00 800 00 24 67 23 **Mexico** 52 555 488 7670
The Netherlands 00 800 00 24 67 23 **New Zealand** 64 9 415 2280 **Norway** 00 800 00 24 67 23 **Poland** 00 800 00 24 67 23 **Portugal** 00 800 00 24 67 23
Russian Federation 00 800 00 24 67 23 **Singapore** 65 6415 3188 **South Africa** 00 800 00 24 67 23 **Spain** 00 800 00 24 67 23 **Sweden** 00 800 00 24 67 23
Switzerland 00 800 00 24 67 23 **Taiwan** 886 2 2578 7189 **Thailand** 66 2 651 8311 **United Arab Emirates** 36 1 459 6150 **United Kingdom** 00 800 00 24 67 23

