



VARIANT II™ DUAL PROGRAM

Fully automated HbA₂, HbF and HbA_{1c} Determination

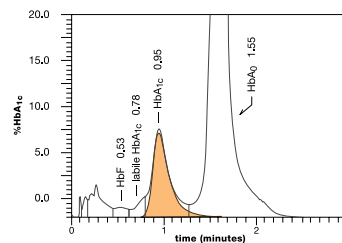
Rapid Switching Between Programs Using Same Reagents and Cartridge

The VARIANT™ II Dual Program* is a fully automated assay for the quantitative determination of hemoglobin A₂, hemoglobin F and hemoglobin A_{1c} (HbA₂, HbF and HbA_{1c}). This assay is an effective method for testing for β-thalassemia, screening of hemoglobinopathies and diabetes monitoring.

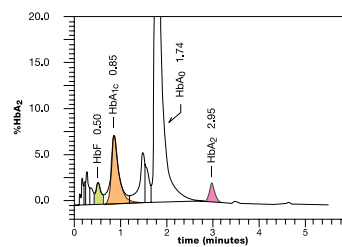
- 3.5 minute hemoglobin A_{1c} method
- 6.5 minute β-thalassemia method
- Rapid switching between methods
- Accurate measurement of HbA_{1c} in the presence of hemoglobins F, S and C
- Chromatographic labile HbA_{1c} separation
- Accurate hemoglobin A₂ and F determination even in the presence of HbS
- Detection of most common hemoglobin variants
- Primary tube sampling
- Positive specimen identification
- Continuous specimen feed
- NGSP certified and traceable to IFCC

* Not available in the US.

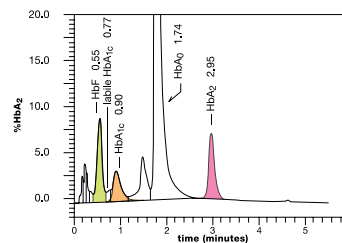
VARIANT™ II Dual Program Sample Chromatograms



Sample from diabetic patient using the Dual Program's Hemoglobin A_{1c} method



Sample from diabetic patient using the Dual Program's β-thalassemia method

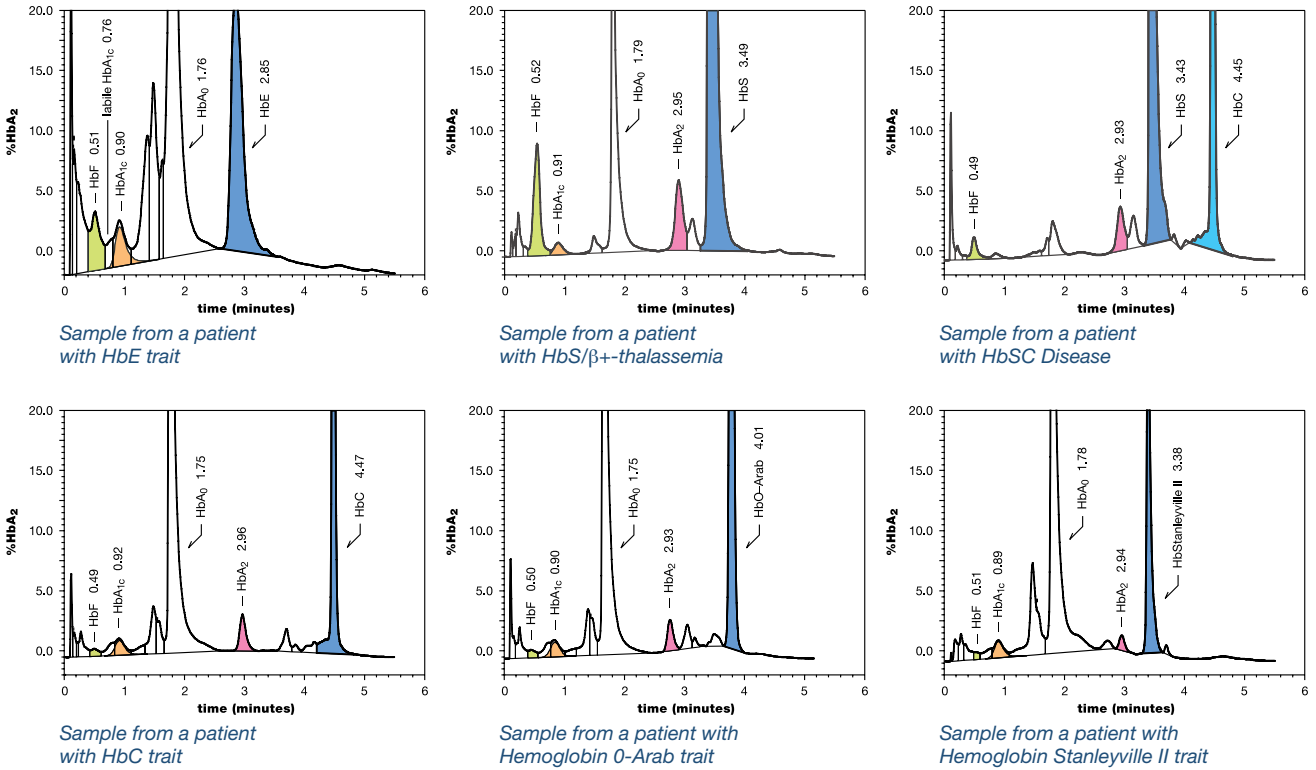


Sample from a β-thalassemia patient using the Dual Program's β-thalassemia method

VARIANT™ II Dual Program

The measurement of elevated levels of hemoglobin A₂ and F is recognized as the most effective way to identify carriers of β-thalassemia. The VARIANT™ II Dual Program provides accurate and simultaneous determination of HbA₂, HbF and HbA_{1c} even in the presence of hemoglobin variants such as HbS and HbC. In addition, determination of hemoglobin A₂, F and A_{1c} is achieved without interference from labile HbA_{1c}, carbamylated hemoglobin, lipemia or temperature fluctuations. The VARIANT™ II Dual Program combines two methods (HbA_{1c} and A₂/F) into one convenient kit.

Hemoglobin Variants Using the Dual Kit's β-thalassemia Method



CE marked, NGSP certified, IFCC traceable

The Bio-Rad VARIANT™ II Dual Program has been CE marked to meet the European IVD Directive and anchored to the IFCC Reference Method. The program is also certified by the NGSP as being traceable to the Diabetes Control and Complications Trial (DCCT). HbA_{1c} results can be reported in SI (Systeme International) units (mmol/mol) and/or in NGSP units (%).

Ordering Information

| Catalog No. | Description | Quantity |
|-------------|---|------------|
| 270-2500 | VARIANT™ II Dual Program Reorder Pack* (HbA ₂ /HbF – 500 tests or HbA _{1c} – 800 tests) | 1 pack |
| 740 | Lyphochek® Diabetes Control, Bilevel (3 each of 2 levels) | 6 x 0.5 mL |
| 553 | Lyphochek® Hemoglobin A ₂ Control, Bilevel (2 each of 2 levels) | 4 x 0.5 mL |

* Not Available in the U.S.



**Bio-Rad
Laboratories, Inc.**

For further information, please contact the Bio-Rad office nearest you or visit our website at www.bio-rad.com/diagnostics

Clinical
Diagnostics Group

Website www.bio-rad.com/diagnostics U.S. 1-800-224-6783 Australia +61(2)9914-2800 Austria +43-1-877-8901 Belgium +32(3)710-53-00 Brazil +55(31)3689-6600
 Canada 1-514-334-4372 China +86-21-61698500 Czech Republic +420-241-430-532 Denmark +45-4452-1000 Finland +358-9-804-22-00 France +33-1-47-95-60-00
 Germany +49(0)89-318-840 Greece +30-210-7774396 Hong Kong +852-2789-3300 Hungary +36-1-459-6100 India +1800-180-1224 Israel +972-3-9636050 Italy +39-02-216091
 Japan +81-3-6361-7070 Korea +82-2-3473-4460 Mexico +52(55)5488-7670 The Netherlands +31-318-540666 New Zealand +64-9-415-2280 Norway +47-23-38-41-30
 Poland +48-22-3319999 Portugal +351-21-472-7700 Russia +7-495-721-1404 Singapore +65-6415-3170 South Africa +27-11-442-85-08 Spain +34-91-590-5200
 Sweden +46-8-555-127-00 Switzerland +41(0)26-674-55-05/06 Taiwan +886-2-2578-7189 Thailand +662-651-8311 United Kingdom +44(0)20-8328-2000